

Master Catalogue

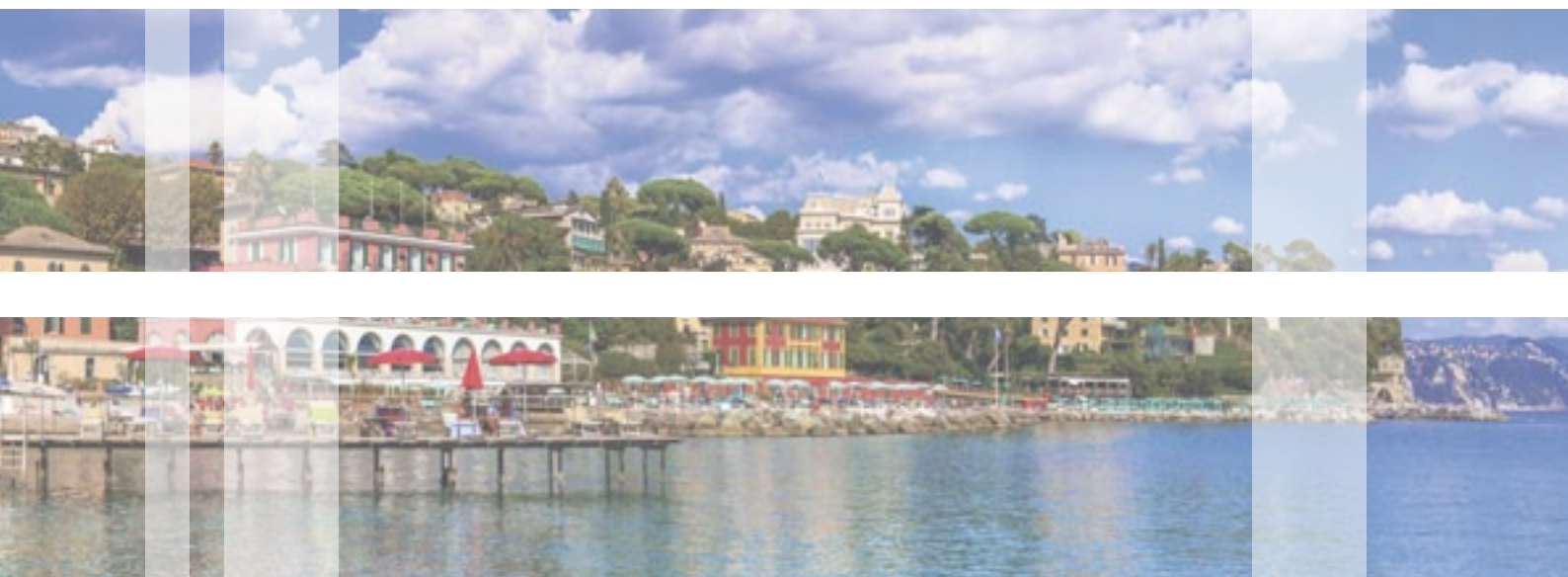


Santa Margherita Ligure - Genova

2023



Innovation • Quality • Service



Master Catalogue

X EDITION

Micerium S.p.A.
Via G. Marconi, 83
16036 Avegno (GE) • Italy
Tel. +39 0185 7887 880
e-mail: hfo@micerium.it
orders: sales@micerium.it
www.micerium.com

V.A.T. CEE IT01199870104
Fully paid-up Share Capital 1.000.000 euro
Fiscal Code and registration to Business Reg.
Ge n° 01199870104 – R.E.A.265808

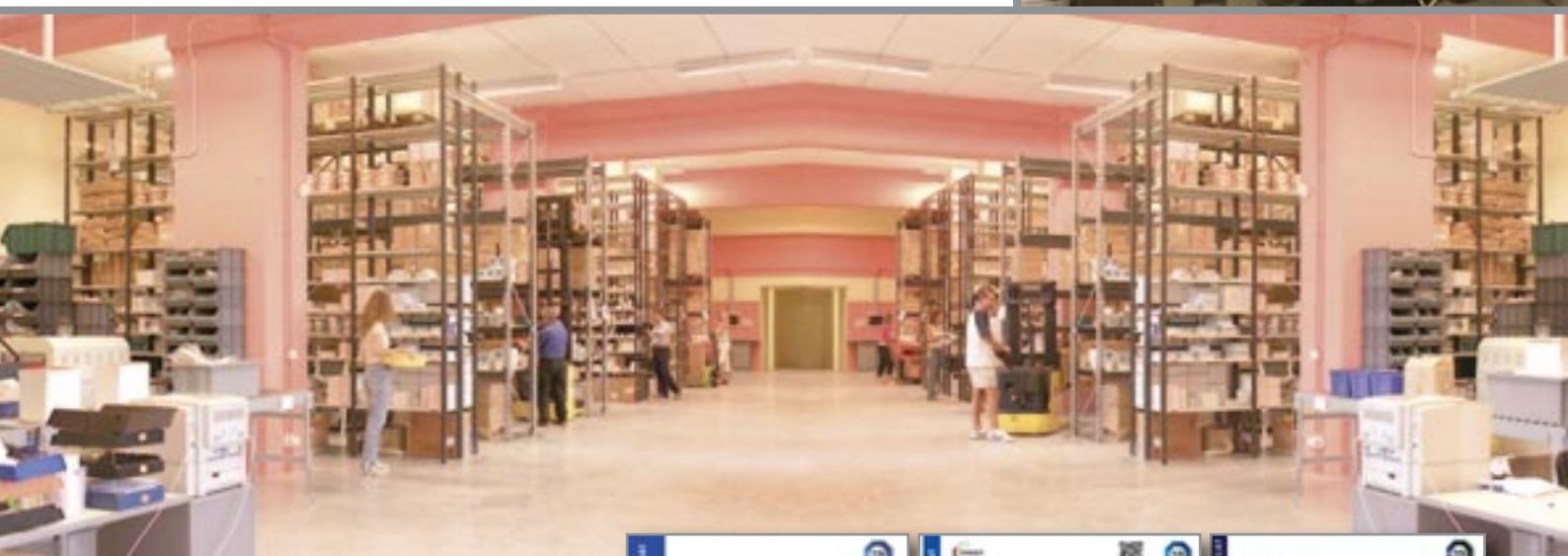




Dear customer,

Micerium S.p.A. is a company operating in the dental field for more than four decades, whose business is in the design and manufacture of medical devices for the dental industry, marketing of medical devices and products for the dental field under other or its own brand name of products for the dental industry.

MICERIUM S.p.A. refers to the quality as a fundamental principle for its activities. We believe that the term "quality" means to ensure our customers innovative products and services that meet or even exceed their expectations.



This level of excellence should not only be demonstrated by the existence of a quality system throughout the organization that meets the requirements of the ISO 9001, ISO 13485 and DIR 93/42 EEC - Annex V and Annex VII and other mandatory requirements, but also measured by the degree of satisfaction of its customers.



Q U A L I T Y



AESTHETICS

Enamel plus Composite	8	Adhesive and Etching	32
Stain, Instruments & Brushes	18	Light Curing Unit & Sectional Matrix	36
Flowable Composite	19	Tender Fiber	41
Composite Finishing & Polishing	20	Discolouration Treatment	42
Ena Post Glass Fiber Post	26	Bleaching System	44
Ena Cem Cement	28	Temporary Resin & Mock up	46
Ena Cem HV	30	Oral Hygiene	47
Ena Soft/Ena Soft Flow	31		



LABORATORY

Temporary Resin	52	Pattern Resin	61
Enamel plus Tender Composite	54	Instruments & Tender Handsaw	62
Light Curing Unit - Vacumix	58	Zircoshiny	63
Electric saw & Router	59		
Wax	60		

Index

Board Direction



Maria Picarelli
President
Chief Administrative
Officer and Human
Resources



Gisella Allemand Miceli
C.E.O.
R&D Coordinator
Aesthetics Department
Director Export Dep.



Eugenio Miceli
C.E.O.
Managing Director
Dental Department



Ottaviano Miceli
C.E.O.
Managing Director
Orthodontic & Implant
Department



**Michèle Allemand
de Frouchtman**
C.E.O.
Spain Area Manager

Export Department



Nathalie Ramponi
Product Specialist
Sales Manager Latin
America & North America



Jana Dostalova
Sales Manager
Eastern Europe



Aaran B.Y. Wan
Sales Manager
Asia (Far East)

Direction assistants



Giuliana Bozzo
Correspondence and
filing



Claudia Masi
Correspondence and
purchasing



Francesca Tanghetti
Customer Service



Valentina Bacigalupo
Customer Service



Davide Fravega
Customer Service

Customer Service

Packaging



Marco Gorziglia
Packaging Manager



Daniela Castelli
Packaging



Paola Manesso
Packaging



Sara Santi
Packaging



Davide Gambino
Packaging

Accounting



Riccardo Mumenthaler
Customer Accounting



Laura Medici
Accounting



Fiorenza Martinotti
Accounting



Antonella Daus
Accounting

Micerium S.p.A. pursues a constant quality improvement policy which is implemented with the involvement of every resource operating within the company.

The Management deeply commits in organizing and developing its assets, including both the internal and external company's resources, such as representatives and suppliers, and to continuously improve the professional level of its staff to meet and satisfy customers' expectations, providing a wide range of high-quality product solutions and more efficient services.

All the staff members are committed to work to their best and to achieve the highest standards within the company. To reach this objective, Micerium S.p.A. strives to maintain a high level of working environment over time.

Micerium S.p.A. also aims to propose to the dental industry high quality products which are used with modern and advanced techniques, which are, at the same time, simple and reproducible.

To achieve all the above-mentioned goals, Micerium S.p.A. also pursues a constant training process addressed both to the sales group and its customers, organizing and supporting courses which guarantee an improvement of the professional level of dentists and dental technicians.

Micerium S.p.A.

Maria Picarelli

President

Quality & Safety



Marica Casavola
Quality Control



Sonia Grandi
Regulatory



Paola Barberis
HSE Manager

Graphic & Internet



Gianluca Zeri
Computer Specialist



Giorgia Rea
Graphic Design
Responsible



Viviane Tsubaki
Graphic Designer

Invoicing Department & Shipping



Rita Correale
Invoicing



Alessandro Farinelli
Shipping



Diego Marzocchi
Shipping



Stefano Puggelli
Packaging & Shipping

Aesthetics

VENEZIA





Aesthetics

- 8 Enamel plus HRi - HFO Composite
- 18 Stain, Instruments & Brushes
- 19 Flowable Composite
- 20 Composite Finishing & Polishing
- 26 Ena Post Glass Fiber Post
- 28 Ena Cem Cement
- 30 Ena Cem HV
- 31 Ena Soft/Ena Soft Flow
- 32 Adhesive and Etching
- 36 Light Curing Unit & Sectional Matrix
- 41 Tender Fiber
- 42 Ena White Discolouration Treatment
- 44 Ena White 2.0 Bleaching System
- 46 Temporary Resin & Mock up
- 47 Oral Hygiene



ENAMEL PLUS HR*i* BIO FUNCTION

New composite with unique characteristics

- > Biocompatible
- > Similar abrasion to natural enamel
- > Ideal handling, sculptibility and polishability

ENA FLOW SEALANT BIO

For natural tooth and composite restoration margin sealing

- > Fluorescent for a better control under UV light
- > Good wear resistance



ENAMEL PLUS HRi BIO FUNCTION

Highly Biocompatible Composite for Anteriors and Posteriors
Composite system for direct and indirect technique, with mechanical and functional characteristics similar to natural enamel

CHARACTERISTICS

- Highly Biocompatible, does not contain Co-monomers nor Bis-GMA
- Similar abrasion to natural enamel
- Mechanical and functional characteristics similar to gold
- Ideal polishability and high gloss retention over time
- Ideal handling: it does not stick to the instrument
- Excellent sculptibility
- Suitable for direct and indirect technique
- High Radiopacity
- Contains Fluoride

3 enamel and 9 dentine shades are available:

- **BF1** low value, **BF2** medium value, **BF3** high value
- **BD0 - BD0,5 - BD1 - BD2 - BD3 - BD3,5 - BD4 - BD5 - BD6**

Completely biocompatible to guarantee a perfect integration in harmony with the human body without releasing any toxic substances. High stability resin matrix and absence of nanoparticles in the powders generated by abrasion phenomenon that could be absorbed by the body. The UDMA and TCDDMDMA innovative formula is Bis-GMA free, a monomer that can liberate Bisphenol-A (BPA), an organic compound that exhibits estrogenic properties in human body causing health problems.

ABRASION

	Depth (mm)	Volume (mm ³)
Natural enamel	0.216 (0.070)	0.404 (0.200)
Gold type III	0.219 (0.060)	0.328 (0.140)
Composite F* (enamel) light cured with Laborlux**	0.459 (0.068)	1.017 (0.239)
Composite F* (enamel) light cured with Led	0.464 (0.069)	0.972 (0.247)
Enamel plus HRi Bio Function light cured with Led	0.252 (0.059)	0.454 (0.057)
Enamel plus HRi Bio Function light cured with Laborlux**	0.212 (0.052)	0.375 (0.052)

* reference composite chosen after identified as the best among the ones tested during the preliminary phase

** curing unit for laboratory; it cures with heat (ca. 70°-80°C)

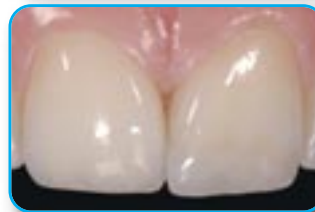
Initial case before rehabilitation



Final case after rehabilitation with direct technique in lower sector and indirect technique in upper sector



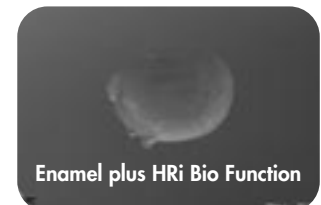
Direct composite restoration with dentine and enamel Enamel plus HRi Bio Function



Clinical cases of Dr. Lorenzo Vanini

WEAR SURFACES

after 120.000 cycles by two-body wear test in a dual axis chewing simulator (University of Chieti - Prof. Camillo D'Arcangelo)



50x SEM images. The abrasion of Enamel plus HRi Bio Function is similar to gold and therefore to the natural enamel.

PHYSICAL DATA

	MPa
Vickers Hardness	685
Flexural Strength	150
Modulus of elasticity	11.600
Compressive Strength	460

Physical data maintained till 4 mm of depth with LED light curing unit (minimum power 1000 mWV)

ENAMEL PLUS HRi BIO FUNCTION KIT



CHR12



CHR6BFD



CR3FB



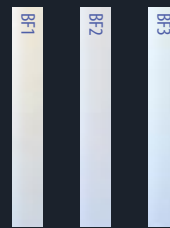
Ref	Description	Q.ty
CHR12	ENAMEL PLUS HRi BIO FUNCTION Complete Kit including 12 syringes 5 g with holder 9 dentine: BDO, BDO,5, BD1 (A1), BD2 (A2), BD3 (A3), BD3,5 (A3,5), BD4 (A4), BD5, BD6 3 enamel: BF1, BF2, BF3	12x5 g
CHR6BFD	ENAMEL PLUS HRi BIO FUNCTION Trial Kit including 6 syringes 2,5 g with holder 4 dentine: BD1 (A1), BD2 (A2), BD3 (A3), BD4 (A4) 2 enamel: BF2,BF3	6x2,5 g
CR3FB	ENAMEL PLUS HRi BIO FUNCTION Trial Kit including 3 syringes 2,5 g 3 enamel: BF1, BF2, BF3	3x2,5 g
CHR12T	ENAMEL PLUS HRi BIO FUNCTION Complete Kit including 72 tips (6 tips x 12 shades) 9 dentine: BDO, BDO,5, BD1 (A1), BD2 (A2), BD3 (A3), BD3,5 (A3,5), BD4 (A4), BD5, BD6 3 enamel: BF1, BF2, BF3	12x6 pcs
CHR6BFDT	ENAMEL PLUS HRi BIO FUNCTION Trial Kit including 36 tips (6 tips x 6 shades) 4 dentine: BD1 (A1), BD2 (A2), BD3 (A3), BD4 (A4) 2 enamel: BF2,BF3	6x6 pcs
CSG12	ENAMEL PLUS HRi BIO FUNCTION Shade guide entirely made in composite; wedge-shaped to facilitate the chromatic effect verification of different thicknesses	12 shades

DENTINE



- **Dentine** with fluorescence and increased translucency calibrated to natural dentine
- **Ultra-light dentine:** BDO and BDO,5 for bleached teeth
- **Ultra-dark dentine:** BD5 and BD6 for cervical area and stratification technique

ENAMEL



Bio Function enamel

- **BF1** low value
- **BF2** medium value
- **BF3** high value

ENAMEL PLUS HRi BIO FUNCTION REFILL



Ref	Description	Syringes
CHRBFB1	Enamel plus HRi Bio Function enamel BF1	5 g
CHRBFB2	Enamel plus HRi Bio Function enamel BF2	5 g
CHRBFB3	Enamel plus HRi Bio Function enamel BF3	5 g
CHRBDO	Enamel plus HRi Bio Function dentine BDO	5 g
CHRBDO,5	Enamel plus HRi Bio Function dentine BDO,5	5 g
CHRBBD1	Enamel plus HRi Bio Function dentine BD1 (A1)	5 g
CHRBBD2	Enamel plus HRi Bio Function dentine BD2 (A2)	5 g
CHRBBD3	Enamel plus HRi Bio Function dentine BD3 (A3)	5 g
CHRBBD3,5	Enamel plus HRi Bio Function dentine BD3,5 (A3,5)	5 g
CHRBBD4	Enamel plus HRi Bio Function dentine BD4 (A4)	5 g
CHRBBD5	Enamel plus HRi Bio Function dentine BD5	5 g
CHRBBD6	Enamel plus HRi Bio Function dentine BD6	5 g

Ref	Description	Tips
CHRTBF1	Enamel plus HRi Bio Function enamel BF1	12x0,3 g
CHRTBF2	Enamel plus HRi Bio Function enamel BF2	12x0,3 g
CHRTBF3	Enamel plus HRi Bio Function enamel BF3	12x0,3 g
CHRTBDO	Enamel plus HRi Bio Function dentine BDO	12x0,3 g
CHRTBDO,5	Enamel plus HRi Bio Function dentine BDO,5	12x0,3 g
CHRTBD1	Enamel plus HRi Bio Function dentine BD1 (A1)	12x0,3 g
CHRTBD2	Enamel plus HRi Bio Function dentine BD2 (A2)	12x0,3 g
CHRTBD3	Enamel plus HRi Bio Function dentine BD3 (A3)	12x0,3 g
CHRTBD3,5	Enamel plus HRi Bio Function dentine BD3,5 (A3,5)	12x0,3 g
CHRTBD4	Enamel plus HRi Bio Function dentine BD4 (A4)	12x0,3 g
CHRTBD5	Enamel plus HRi Bio Function dentine BD5	12x0,3 g
CHRTBD6	Enamel plus HRi Bio Function dentine BD6	12x0,3 g

● Bio Function Enamel ● Bio Function Dentine



Autoclavable syringe for tips

Facilitates the extrusion of composite.



COSMTS

SYRINGE FOR TIPS

Ref	Description	Q.ty
COSMTS	Syringe for tips	1 pc

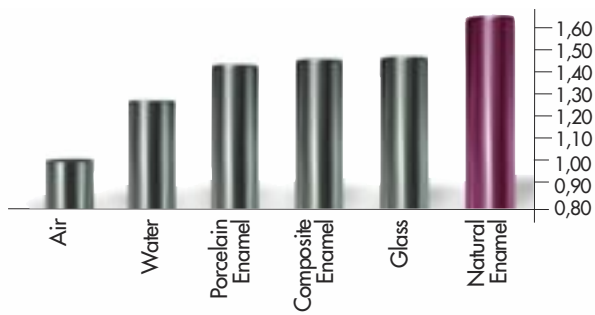
THE PROBLEM

THE REFRACTION OF COMPOSITE & CERAMIC MATERIALS...



“Glass Effect” lowers the value of the restoration with a grey halo on the margin (dark line)

RELATIVE REFRACTIVE INDEX OF LIGHT (n)



The relative refractive indexes of common materials measured at a temperature of 20°C and with a 589 nm wavelength light indicate the deviation and speed reduction of the light that crosses a translucent area (Vanini Mangani Klimovskaia “Conservative Restoration of Anterior Teeth” Acme 2005)

HRi: THE TRUE ENAMEL



HRi Enamel veneers showing natural effects

Different thicknesses of Enamel plus **HRi** change in shade in the same manner as Natural Enamel would in the same thickness.

Thickness of 0,6 mm allows ideal translucency



Application of dentine and opalescent OBN

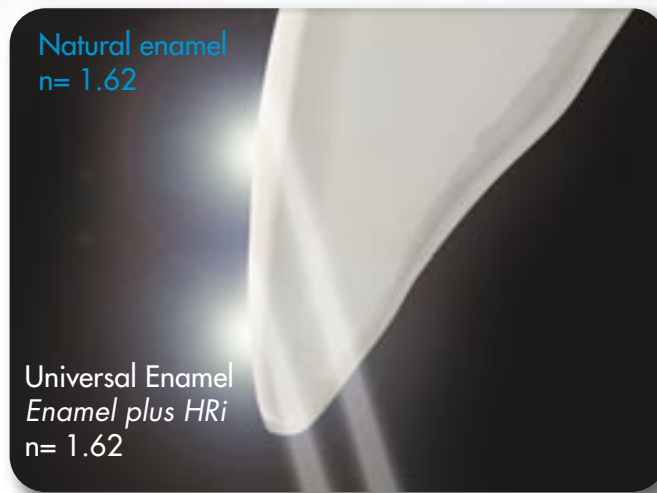


UE1 low value (amber)

UE2 medium value

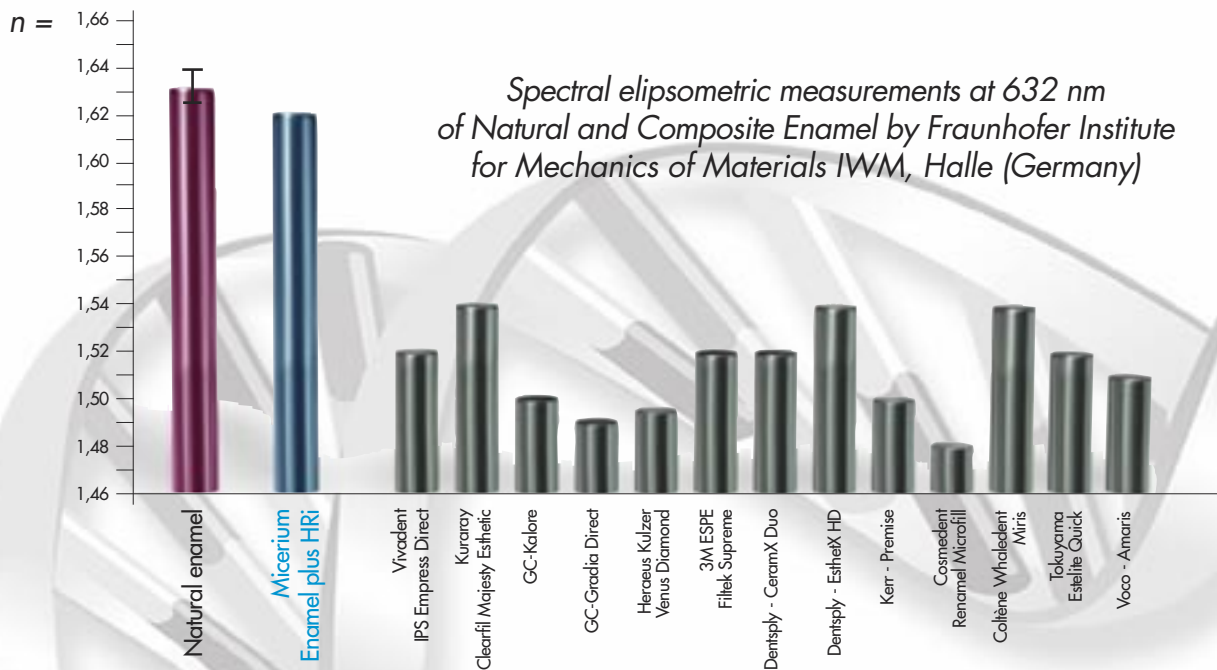
UE3 high value (for children or bleached teeth)

... THE SAME REFRACTIVE INDEX AS NATURAL ENAMEL

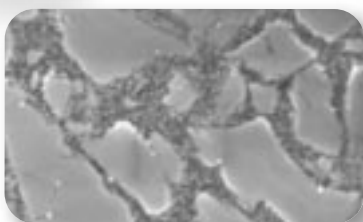


Invisible margins, in **HRi** restoration, using the same thickness of the natural enamel

RELATIVE REFRACTIVE INDEX



NANOTECHNOLOGY REM



• Composition FILLING (80% WEIGHT - 63% VOLUME)

- Surface-treated nano zirconium oxide with high refractive index (12% in weight)
- New type of filling glass with high refractive index (68% in weight)

• Ideal physical data

for every type of direct or indirect restoration

- Vickers Hardness 700 MPa
- Modulus of elasticity 14.500 MPa
- Flexural Strength 170 MPa
- Compressive strength 450 MPa
- High radiopacity 600% Al



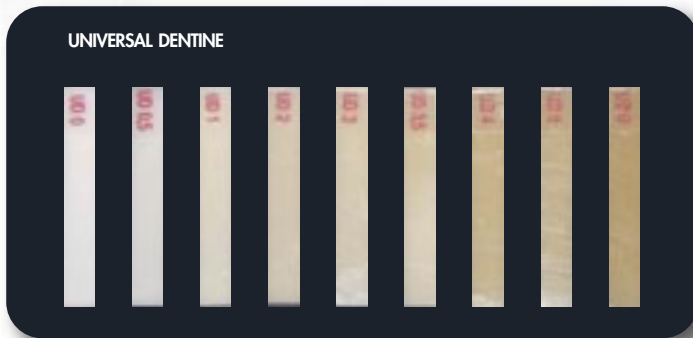
The HRi project has been devised from Dr. L.Vanini and developed in collaboration with Dr. T. Niem (Patent Pending)

This project (HA-Project-Nr: 130/07-01) has received special funding from the State of Hessen, co-financed by funds of the European Union (European Social Fund - ESF) for scientific innovation and advancement.

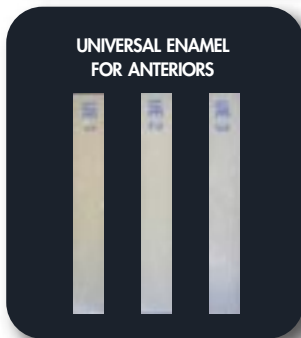
ENAMEL PLUS HRi

Characteristics and clinical cases

TECHNOLOGICAL ADVANTAGES



- **Dentine** with fluorescence and increased translucency calibrated to natural dentine
- **Ultra-light Dentine:** U0 and U0,5 for bleached teeth



- Universal** (low, medium and high value)
- **Invisible margin thanks to high refraction index** no "glass effect" lowering the value of the restoration
 - **Opalescent effect blue and amber given by HRi Enamel** (Transparency 30% until 0,8 mm)
- Function** (low, medium and high value)
- **Low abrasion** ideal for posteriors



- **Characterization and intensive effect** created by intensive enamel (IM, IWS, IW) and opalescent amber (OA)
- **Opalescent blue effect** enhanced by Opalescent OBN

OPERATING ADVANTAGES: SIMPLE TECHNIQUE

"JUST ENAMEL" TECHNIQUE
using Enamel plus HRi universal enamel

"BASIC" TECHNIQUE
using Enamel plus HRi, dentine and enamel

"MASTER" TECHNIQUE
additional shades for opalescence, intensive and characterization



ENAMEL PLUS HRi KIT



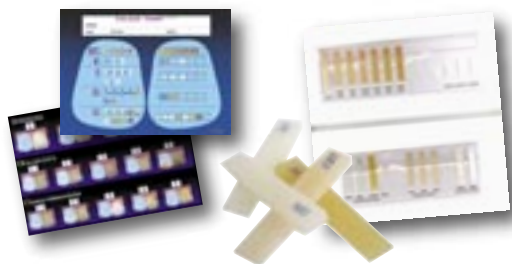
CHR15



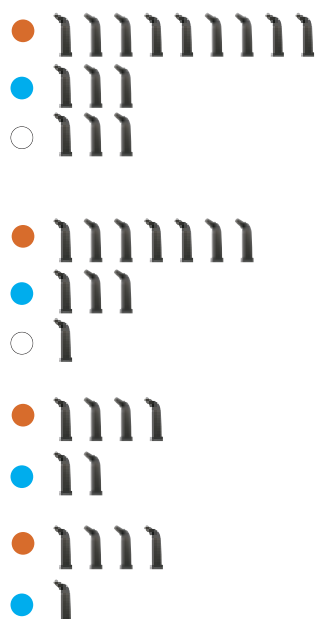
CHR6

Ref	Description	Q.ty
CHR15	ENAMEL PLUS HRi Complete Kit including 15 syringes 5 g with holder 9 dentine: UDO, UDO,5, UD1 (A1), UD2 (A2), UD3 (A3), UD3,5 (A3,5), UD4 (A4), UD5, UD6 3 universal enamel: UE1, UE2, UE3 3 intensive enamel: White (IW), White Spot (IWS), Milky (IM)	15x5g
CHR11	ENAMEL PLUS HRi Complete Kit including 11 syringes 5 g with holder 7 dentine: UDO, UD1 (A1), UD2 (A2), UD3 (A3), UD4 (A4), UD5, UD6 3 universal enamel: UE1, UE2, UE3 1 intensive enamel: White Spot (IWS)	11x5g
CHR6*	ENAMEL PLUS HRi Trial Kit including 6 syringes 2,5 g with holder 4 dentine: UD1 (A1), UD2 (A2), UD3 (A3), UD4 (A4) 2 universal enamel: UE2, UE3	6x2,5g
CHR5B	ENAMEL PLUS HRi "Bleach" Kit including 5 syringes 2,5 g with holder 4 dentine: UDO, UDO,5, UD1 (A1), UD2 (A2) 1 universal enamel: UE3	5x2,5g

**It is possible to replace UE3 with UE1 (Ref. Kit CHR6B)*



Ref	Description	Q.ty
CSG15	Enamel plus HRi complete shade guide	15 shades
HFOMAP2	Colour chart for colour registration	50 sheets
PLEXI26D	Plexiglass syringe holder 26 holes	1 pc
PLEXI9D	Plexiglass syringe holder 9 holes	1 pc



Ref	Description	Q.ty
CHR15T	ENAMEL PLUS HRi Complete Kit Tips including 90 tips (6 tips x 15 shades) 9 dentine: UDO, UDO,5, UD1 (A1), UD2 (A2), UD3 (A3), UD3,5 (A3,5), UD4 (A4), UD5, UD6 3 universal enamel: UE1, UE2, UE3 3 intensive enamel: White (IW), White Spot (IWS), Milky (IM)	15x6 pcs
CHR11T	ENAMEL PLUS HRi Complete Kit Tips including 66 tips (6 tips x 11 shades) 7 dentine: UD1 (A1), UD2 (A2), UD3 (A3), UD3,5 (A3,5), UD4 (A4), UD5, UD6 3 universal enamel: UE1, UE2, UE3 1 intensive enamel: White Spot (IWS)	11x6 pcs
CHR6T*	ENAMEL PLUS HRi Trial Kit Tips including 36 tips (6 tips x 6 shades) 4 dentine: UD1(A1), UD2(A2), UD3(A3), UD4(A4) 2 universal enamel: UE2, UE3	6x6 pcs
CHR5BT	ENAMEL PLUS HRi "Bleach" Kit Tips including 30 tips (6 tips x 5 shades) 4 dentine: UDO, UDO,5, UD1 (A1), UD2 (A2) 1 universal enamel: UE3	5x6 pcs

**It is possible to replace UE3 with UE1 (Ref. Kit CHR6BT)*



ENAMEL PLUS HRi REFILL



Ref	Description	Syringes
CHREF1	Enamel plus HRi Function enamel EF1	5 g
CHREF2	Enamel plus HRi Function enamel EF2	5 g
CHREF3	Enamel plus HRi Function enamel EF3	5 g
CHRUE1	Enamel plus HRi universal enamel UE1	5 g
CHRUE2	Enamel plus HRi universal enamel UE2	5 g
CHRUE3	Enamel plus HRi universal enamel UE3	5 g
CHRIW	Enamel plus HRi intensive enamel White	5 g
CHRIIM	Enamel plus HRi intensive enamel Milky	5 g
CHRIWS	Enamel plus HRi intensive enamel White Spot	5 g
CHRUD0	Enamel plus HRi dentine UD0	5 g
CHRUD0,5	Enamel plus HRi dentine UD0,5	5 g
CHRUD1	Enamel plus HRi dentine UD1 (A1)	5 g
CHRUD2	Enamel plus HRi dentine UD2 (A2)	5 g
CHRUD3	Enamel plus HRi dentine UD3 (A3)	5 g
CHRUD3,5	Enamel plus HRi dentine UD3,5 (A3,5)	5 g
CHRUD4	Enamel plus HRi dentine UD4 (A4)	5 g
CHRUD5	Enamel plus HRi dentine UD5	5 g
CHRUD6	Enamel plus HRi dentine UD6	5 g
CHFOA	Enamel plus opalescent enamel Amber	5 g
CHFOBN	Enamel plus opal.enamel Blue Natural	5 g

Ref	Description	Tips
CHRTF1	Enamel plus HRi Function enamel EF1	12x0,3 g
CHRTF2	Enamel plus HRi Function enamel EF2	12x0,3 g
CHRTF3	Enamel plus HRi Function enamel EF3	12x0,3 g
CHRTUE1	Enamel plus HRi universal enamel UE1	12x0,3 g
CHRTUE2	Enamel plus HRi universal enamel UE2	12x0,3 g
CHRTUE3	Enamel plus HRi universal enamel UE3	12x0,3 g
CHRTIW	Enamel plus HRi intensive enamel White	12x0,3 g
CHRTIM	Enamel plus HRi intensive enamel Milky	12x0,3 g
CHRTIWS	Enamel plus HRi intens. enamel White Spot	12x0,3 g
CHRTUD0	Enamel plus HRi dentine UD0	12x0,3 g
CHRTUD0,5	Enamel plus HRi dentine UD0,5	12x0,3 g
CHRTUD1	Enamel plus HRi dentine UD1 (A1)	12x0,3 g
CHRTUD2	Enamel plus HRi dentine UD2 (A2)	12x0,3 g
CHRTUD3	Enamel plus HRi dentine UD3 (A3)	12x0,3 g
CHRTUD3,5	Enamel plus HRi dentine UD3,5 (A3,5)	12x0,3 g
CHRTUD4	Enamel plus HRi dentine UD4 (A4)	12x0,3 g
CHRTUD5	Enamel plus HRi dentine UD5	12x0,3 g
CHRTUD6	Enamel plus HRi dentine UD6	12x0,3 g
CHFTOA	Enamel plus opalescent enamel Amber	12x0,3 g
CHFTOBN	Enamel plus opal.enamel Blue Natural	12x0,3 g

● Function Enamel
 ● Universal Enamel
 ○ Intensive Enamel
 ● Dentine
 ● Opalescent Enamel



Microhybrid, radiopaque light curing composite

"HFO" the classical composite for direct and indirect aesthetic reconstructions.

- Fluorescent dentine calibrated to the natural tooth
- Generic Enamels: three values to reproduce elderly (GE1), adult (GE2) and young (GE3) teeth
- Opalescent and Intensive enamels for reproducing opalescent and characterization of the natural enamel

Ref	Description	Syringes
CHFGE1	Enamel plus HFO generic enamel GE1	5 g
CHFGE2	Enamel plus HFO generic enamel GE2	5 g
CHFGE3	Enamel plus HFO generic enamel GE3	5 g
CHFOV	Enamel plus HFO opalescent enamel White	5 g
CHFOG	Enamel plus HFO opalescent enamel Grey	5 g
CHFOA	Enamel plus HFO opalescent enamel Amber	5 g
CHFOBN	Enamel plus HFO opalescent Blue natural	5 g
CHFIM	Enamel plus HFO intensive Milky	5 g
CHFIW	Enamel plus HFO intensive White	5 g
CHFUD1	Enamel plus HFO dentine UD1 (A1)	5 g
CHFUD2	Enamel plus HFO dentine UD2 (A2)	5 g
CHFUD3	Enamel plus HFO dentine UD3 (A3)	5 g
CHFUD3,5	Enamel plus HFO dentine UD3,5 (A3,5)	5 g
CHFUD4	Enamel plus HFO dentine UD4 (A4)	5 g
CHFUD5	Enamel plus HFO dentine UD5	5 g
CHFUD6	Enamel plus HFO dentine UD6	5 g
COSHFOB1	Enamel plus HFO dentine B1	5 g
COSHFOB2	Enamel plus HFO dentine B2	5 g
COSHFOB3	Enamel plus HFO dentine B3	5 g
COSHFOB4	Enamel plus HFO dentine B4	5 g
COSHFOC1	Enamel plus HFO dentine C1	5 g
COSHFOC2	Enamel plus HFO dentine C2	5 g
COSHFOC3	Enamel plus HFO dentine C3	5 g
COSHFOC4	Enamel plus HFO dentine C4	5 g
COSHFOD3	Enamel plus HFO dentine D3	5 g

* Colours B...C...D3 shades available on request (colours of Vita® shade guide. Vita® is a registered trademark of Vita Zahnfabrik H. Rauter mbH & Co. KG, Bad Säckingen - D)

*Available also in unidose Tips Kit (Ref. CHF15T) and 12 pcs refill (Ref. CHFTGE1, CHFT...)



Ref	Description	Q.ty
CHF15	ENAMEL PLUS HFO Complete Kit including: 15 syringes 5 g with holder 7 dentine: UD1 (A1), UD2 (A2), UD3 (A3), UD3,5 (A3,5), UD4 (A4), UD5, UD6 3 generic enamel: GE1, GE2, GE3 3 opalescent enamel: OBN, OA, OW 2 intensive enamel: White (IW), Milky (IM)	15x5 g
CHF7	ENAMEL PLUS HFO Trial Kit including: 7 syringes 2,5 g with holder 4 dentine: UD2 (A2), UD3 (A3), UD4 (A4), UD5 2 generic enamel: GE2, GE3 1 opalescent enamel: OBN	7x2,5 g

ENA HEAT Composite Heating Conditioner

It warms up the composite at the temperature of approx. 39°C, making the material more flowable and reducing the stress in the extrusion from the syringe and stratification phases. In this way, this reduces the risk of separation between the matrix and the filler, it improves the biomechanical characteristics of the composite and it avoids bubbles. It is possible to regulate the temperature at 55°C to obtain even more flowable material for cementation. With 6 spaces for syringes and 4 spaces for tips. Also for warming up sodium hypochlorite and anesthetic.

SYRINGE/TIPS HEATER



Ref	Description	Q.ty
CHC3	COMPOSITE HEATING CONDITIONER ENA HEAT 110-240V, 50-60 Hz, 500mA Allows to use composite at the ideal temperature of 39°C for modelling and 55°C for cementation	1 pc

ENAMEL PLUS STAIN & INSTRUMENTS

Fluorescent Composite Stains

Unique fluorescent stains used for characterization in both the dental practice and laboratory. Due to high fluorescence, they naturally integrate with the natural tooth. Stains can be used alone or mixed with the composite without changing its fluorescent characteristics.



COSSTAINKIT

MICERIUM BRUSHES FOR COMPOSITE MANIPULATION



Ref	Description	Q.ty
COSSTAINKIT	ENAMEL PLUS STAIN KIT Fluorescent stains in syringe: white, yellow, orange, blue, brown, dark brown Brushes (2 type C - 2 type F - 2 type M)	6x2 g 6 pcs
COSSTAIN1N	White stain refill	2 g
COSSTAIN3N	Blue stain refill	2 g
COSSTAIN4N	Brown stain refill	2 g
COSSTAIN5N	Dark brown stain refill	2 g
COSSTAIN6N	Black stain refill	2 g
COSSTAIN7N	Yellow stain refill	2 g
COSSTAIN8N	Orange stain refill	2 g
COSSTAIN T	Transparent stain refill	2 g
COSSTAINO1	Mixing palette with cover for improving composite modulation	1 pc
COSPEN11	Brush C for stains	1 pc
COSPEN12	Brush F for fossa	1 pc
COSPEN13	Brush M for manipulation	1 pc
TPENS	Soft white silicone brush with small tip for composite handling	5 pcs
TPENN	Hard black silicone brush with small tip for composite handling	5 pcs
TPENMC	Silicone brush blue tip with metal handle 45°/45° sterilizable for composite handling	5 pcs
TPENMS	Silicone brush blue tip with metal handle 90°/180° sterilizable for composite handling	5 pcs
TPENMP	Silicone brush blue tips refill	5 pcs
TLV1	Composite application instrument for anteriors including 1 fixed spatula 1 grey extra flexible spatula 1 white flexible spatula	1 pc 1 pc 1 pc
TLV2	Composite application instrument for posteriors	1 pc
TRAW	White flexible tip	2 pcs
TRAG	Grey ultra flexible tip	2 pcs

ENAMEL PLUS HRi FLOW^{HF}

Material to be used in posteriors as cavity liner for direct and indirect restorations (before taking the impression) and in anteriors for class V.

- Highly Filled
- Higher Viscosity & Elasticity
- Higher Radiopacity & High Physical Properties
- No bubbles



PHYSICAL CHARACTERISTICS

	FILLER (Weight) %	VICKERS HARDNESS MPa	YOUNG MODULUS MPa	FLEXURAL STRENGTH MPa	COMPRESSIVE STRENGTH MPa	RADIOPACITY
Flow HF	77	770	13485	148	394	210% Al
Standard Flow	55	350	6000	120	350	30% Al

Ref	Description	Q.ty
CHR1F	ENAMEL PLUS HRi FLOW Intro Kit Dentine syringe: UD1 (A1), UD2 (A2), UD3 (A3), UD3,5 (A3,5), UD4 (A4), UD5, UD6. Black tips ø 1,2 mm Plexiglass holder	7x2 g 25 pcs 1 pc
CHRFUDO	HRi Flow UDO refill + 3 tips	2 g
CHRFUDO,5	HRi Flow UDO,5 refill + 3 tips	2 g
CHRFUD1	HRi Flow UD1 (A1) refill + 3 tips	2 g

Ref	Description	Q.ty
CHRFUD2	HRi Flow UD2 (A2) refill + 3 tips	2 g
CHRFUD3	HRi Flow UD3 (A3) refill + 3 tips	2 g
CHRFUD3,5	HRi Flow UD3,5 (A3,5) refill + 3 tips	2 g
CHRFUD4	HRi Flow UD4 (A4) refill + 3 tips	2 g
CHRFUD5	HRi Flow UD5 refill + 3 tips	2 g
CHRFUD6	HRi Flow UD6 refill + 3 tips	2 g
CHRF25	Tips 1,2 mm	25 pcs
PLEX11	Plexiglass holder x 11 Flow syringe holes	1 pc

Low viscosity flowable composite



ENAMEL PLUS HFO FLOW

Ref	Description	Q.ty
CHF1F	ENAMEL PLUS HFO FLOW Intro Kit Dentine syringe: UD1 (A1), UD2 (A2), UD3 (A3), UD3,5 (A3,5), UD4 (A4), UD5, UD6. Black tips ø 1,2 mm Plexiglass holder	7x2 g 25 pcs 1 pc
CHFFUD1	HFO Flow UD1 (A1) refill + 3 tips	2 g
CHFFUD2	HFO Flow UD2 (A2) refill + 3 tips	2 g
CHFFUD3	HFO Flow UD3 (A3) refill + 3 tips	2 g
CHFFUD3,5	HFO Flow UD3,5 (A3,5) refill + 3 tips	2 g
CHFFUD4	HFO Flow UD4 (A4) refill + 3 tips	2 g
CHFFUD5	HFO Flow UD5 refill + 3 tips	2 g
CHFFUD6	HFO Flow UD6 refill + 3 tips	2 g
COSHF3	HFO Flow B3 refill + 3 tips	2 g
COSHF4	HFO Flow B4 refill + 3 tips	2 g
CHFF25	Black tips ø 0,8 mm	25 pcs

Highly flowable body with high elasticity and calibrated light diffusion that reproduces protein layer of natural tooth

- Increases the internal light diffusion in direct and indirect restorations, reducing the decrease in value typical of the vitreous masses (no need with HRi Universal Enamel).
- Increases the dentine fluorescence of non vital teeth.

GLASS CONNECTOR



Ref	Description	Q.ty
COSHF0GC	Enamel plus HFO Glass Connector + 3 tips	1 g

Shiny



Correction of surface tooth geography

Finishing and polishing: Shiny14 diamond rubber point, Shiny A 3 μ and Shiny B 1 μ diamond paste with brushes

Micerium provides everything needed for finishing and polishing of direct aesthetic restorations, laboratory veneers, inlays and crowns made in composite.

THE SYSTEM INCLUDES

- Diamond paste: SHINY A 3 μ m, SHINY B 1 μ m
- Aluminium oxide paste SHINY C
- Air Block SHINY G
- Brushes and felts SHINY S, SHINY F
- Pre-polishing rubber point SHINY14 & SHINY33
- Finishing accessories

SURFACE TREATMENT

	Vickers Hardness	Deviat.
Enamel plus HRi microhybrid	55	1,2
HRi microhybrid (a.b.+d.p.)	+10%	0,8
Microfill	18-30	4

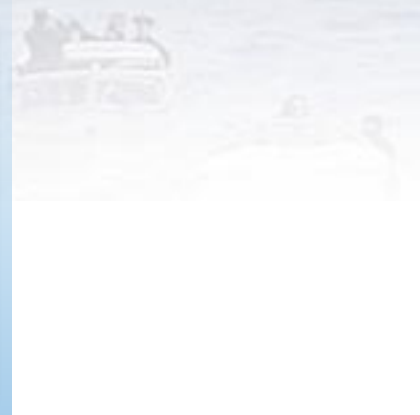
Surface treatment: Vickers hardness and its deviation from standard values (a.b.=Air Block • d.p.=Diamond Paste).



ENAMEL PLUS SHINY KIT



Aluminium oxide paste Shiny C with felt wheel; restoration finished and polished under direct light (left) and under polarized light (right)



Ref	Description	Q.ty
COSSHINYKIT	SHINY FINISHING KIT	
	Diamond paste SHINY A 3 micron	2 g
	Diamond paste SHINY B 1 micron	2 g
	Shiny paste SHINY C	35 g
	Air Block SHINY G	7 tips
	SHINY Burs	4 pcs
	Goat hair brushes RA Shiny S/SS	3 pcs
	SHINY 4... brush for posteriors	3 pcs
	SHINY Strips (diamond 5...)	4 pcs
	SHINY Strips (paper M...)	16 pcs
	SHINY Discs	12 pcs
	Felt disc SHINY FD	5 pcs
	Felt wheel SHINY F/SF	5 pcs
	Diamond Rubber point SHINY 14	2 pcs
	Mandrel RA	2 pcs
	Disposable brushes	10 pcs
	Handle for brushes	1 pc



COSSHINY+G	POLISHING PASTE SHINY KIT	
	Diamond paste SHINY A 3 micron	2 g
	Diamond paste SHINY B 1 micron	2 g
	Shiny paste SHINY C	35 g
	Goat hair brushes RA Shiny S/SS	3 pcs
	Felt disc SHINY FD	3 pcs
	Felt wheel SHINY F/SF	3 pcs
	Mandrel RA	1 pc
	Air Block SHINY G	2 tips
	Diamond Rubber point SHINY 14	1 pc
	SHINY 4... brush for posteriors	2 pcs
	SHINY Strips (diamond 5...)	4 pcs
	SHINY Strips (paper M...)	4 pcs



COSSHINY+G	POLISHING PASTE SHINY MINI KIT	
	Diamond paste SHINY A 3 micron	0,5 g
	Diamond paste SHINY B 1 micron	0,5 g
	Shiny paste SHINY C	4 g
	Goat hair brushes RA Shiny S	2 pcs
	Mandrel RA	1 pc
	Felt wheel SHINY F	2 pcs
	Diamond Rubber point SHINY 14	1 pc
	Air Block SHINY G	2 tips
	SHINY 4... brush for posteriors	1 pc
	SHINY Strips (diamond 5...)	2 pcs
	SHINY Strips (paper M...)	2 pcs

TSY	FINISHING SHINY KIT FOR LABORATORY	
	Paste SHINY A & Paste SHINY B	2x0,5 g
	Shiny paste SHINY C	4 g
	Tip Glycerine	1 pc
	Paper cone with mandrel	1 pc
	Goat brush Shiny S-HP	1 pc
	Felt Shiny F-HP	1 pc
	Carbide Bur FG	1 pc
	Green carborundum bur HP	1 pc
	Diamond burs HP (D717-D725-D727)	3 pcs
	Diamond disc 2 sides 0,15mm D751	1 pc

ENAMEL PLUS SHINY REFILLS

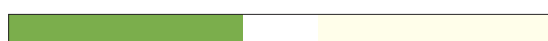
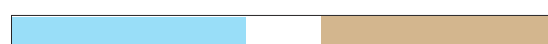
Ref	Description	Q.ty
COSSHINYG7	SHINY G glycerine Air Block in tips 0,5 ml	7 pcs
COSSHINYG	SHINY G glycerine Air Block in syringe	2 ml
COSSHINYG10	SHINY G glycerine Air Block in syringe	10 ml
COSSHINYA	SHINY A 3 micron Diamond paste for pre-polishing to be used with Shiny S	2 g
COSSHINYB	SHINY B 1 micron Diamond paste for polishing to be used with Shiny S	2 g
COSSHINYC	SHINY C aluminium oxide paste for shiny to be used with Shiny F	35 g
COSSHINYS	SHINY S goat brush wheel RA	12 pcs
COSSHINYSHP	SHINY S goat brush wheel HP	12 pcs
CSS	SHINY SS goat brush wheel RA Mini for posterior	12 pcs
COSSHINYF	SHINY F felt wheel 2 mm to be used with COSSHINY6	30 pcs
COSSHINYFD	SHINY FD interproximal felt disc 0,5 mm	100 pcs
CSF	SHINY SF cotton felt wheel RA (17x10 mm)	12 pcs
COSSHINYFHP	SHINY FHP felt wheel	12 pcs
COSSHINY13	SHINY rubber points for pre-polishing	12 pcs
COSSHINY33	SHINY brown rubber points	12 pcs
CS014	SHINY14 Diamond Rubber points for pre-polishing composite	6 pcs
COSSHINY15	SHINY15 Diamond Rubber for polishing composite	3 pcs
CS041	SHINY41 Impregnated Brush for posteriors "Point"	6 pcs
CS042	SHINY42 Impregnated Brush for posteriors "Mini Cup"	6 pcs
CS043	SHINY43 Impregnated Brush for posteriors "Cup"	6 pcs



ENAMEL PLUS SHINY REFILL

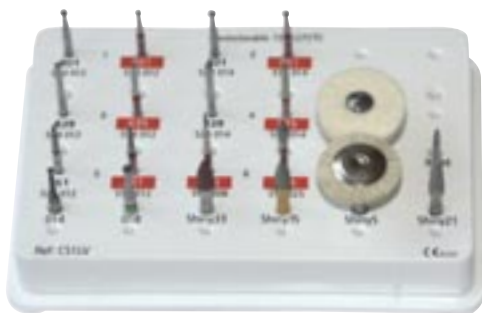


Ref	Description	Q.ty
COSSHINYCON	Paper cones HP	25 pcs
COSSHINYCONM	Mandrel for paper cones Shiny	1 pc
COSSHINY6	SHINY Mandrel for felt wheels	6 pcs
COSSHINYFM	SHINY Mandrel for discs	1 pc
COSSHINYDF	SHINY DISCS extra fine brown grain	100 pcs
COSSHINYDX	SHINY DISCS fine blue grain	100 pcs
COSSHINYDM	SHINY DISCS medium green grain	100 pcs
COSSHINYDC	SHINY DISCS coarse ivory grain	100 pcs
COSSHINYSF	SHINY STRIPS fine (blue) extrafine (brown) grain	100 pcs
COSSHINYSFS	SHINY STRIPS fine-extra fine narrow grain	100 pcs
COSSHINYSM	SHINY STRIPS medium (green) coarse (ivory) grain	100 pcs
COSSHINYSMS	SHINY STRIPS medium-coarse narrow grain	100 pcs
COSSHINY1	Handle for brushes	1 pc
COSSHINY50	Brush refill	50 pcs
COSSHINY25	Tips ø 0,9 mm for Glycerine & Flow	25 pcs
CS050-2R	Diamond strips 120 mm x 2mm fine red	5 pcs
CS050-2Y	Diamond strips 120 mm x 2mm extra fine yellow	5 pcs
CS050-4R	Diamond strips 120 mm x 4mm fine red	5 pcs
CS050-4Y	Diamond strips 120 mm x 4mm extra fine yellow	5 pcs



ENA SHINY BUR KITS by DR. LORENZO VANINI

BUR KIT ANTERIOR DIRECT COMPOSITE



Ref	Description	Q.ty
CS1LV	Preparation Finishing & Polishing Kit anterior direct composite	
	Diamond Burs Shiny FG	12 pcs
	Round Carbide Bur Shiny RA	2 pcs
	30 blades Carbide Bur FG	1 pc
	Carborundum mounted point RA (CS21)	1 pc
	Brown & grey diamond rubber points Shiny RA	2 pcs
	Goat hair brush RA	1 pc
	Felt wheel RA	1 pc
	Air Block glycerine Shiny G	1 tip
	Polishing pastes Shiny A, B, C	

BUR KIT POSTERIOR DIRECT & INDIRECT COMPOSITE



Ref	Description	Q.ty
CS2LV	Preparation Finishing & Polishing Kit posterior direct & indirect composite	
	Diamond Burs Shiny FG	16 pcs
	Round Carbide Bur Shiny RA	2 pcs
	Brown & grey diamond rubber points Shiny RA	2 pcs
	Goat hair brush RA	1 pc
	Felt wheel RA	1 pc
	Air Block glycerine Shiny G	1 tip
	Polishing pastes Shiny A, B, C	

BUR KIT 50°-90° METAL CROWN



Ref	Description	Q.ty
CS4LV*	Preparation & Finishing Kit 50° & 90° metal crown	
	Diamond Burs Shiny FG	18 pcs
	Brown rubber point RA	1 pc

*Kit CS4LV available until stock last.

ENA SHINY REFILL

KIT CONTENT

Diamond Grain:	Diamond Grain:	Shape	Q.ty	CS1LV	CS2LV	CS3LV*	CS4LV
Fine ●	Medium ○						
X-Fine ●	Coarse ●						
CS368514025	CS368524025		3 pcs	●	● ○	● ○	
CS390504016			3 pcs		●		
CS801514012	CS801524012		3 pcs	● ○		● ○	
CS801514014	CS801524014		3 pcs	● ○			
CS801514016	CS801524016		3 pcs				
CS811504040	CS811534040		3 pcs		● ●		
CS811514037	CS811524037		3 pcs				● ○
CS839514012	CS839524012		3 pcs	● ○			
CS839514014	CS839524014		3 pcs	● ○			
CS839514016	CS839524016		3 pcs				● ○
CS847514016	CS847524016		3 pcs				● ○
CS847R514016	CS847R524016		3 pcs			●	
CS848514012	CS848524012		3 pcs				● ○
CS848514018	CS848524018		3 pcs				● ○
CS849514012	CS849524012		3 pcs		● ○		
CS849514016	CS849524016		3 pcs		● ○		
CS850514016	CS850524016		3 pcs			○	
CS850514018	CS850524018		3 pcs				● ○
CS853514008			3 pcs	●	●		
CS855514014	CS855524014		3 pcs		● ○		
CS856504018	CS856534016		3 pcs		● ●		
CS859504014	CS859534012		3 pcs		● ●		
CS861514012	CS861524012		3 pcs	● ○			
CS878514012	CS878524012		3 pcs				● ○
CS878514016	CS878524016		3 pcs				● ○
CS879514012	CS879524012		3 pcs				● ○
CS879514016	CS879524016		3 pcs				● ○
Carbide Bur	CS1S014		3 pcs	●	●		
Carbide Bur	CS1S018		3 pcs	●	●		
Carbide Bur	CS9904		3 pcs	●			
Rubber point, brushes, felt and carborundum stone				○ ○ ●	○ ● ○	●	●

● 15 μ ● 40 μ ○ 80-100 μ ● 130 μ ● Carbide bur ○ Carborundum ● Shiny14 ○ Shiny15 ● Shiny33 ○ ShinyS ○ ShinyF

*Kit CS3LV is discontinued. Refills available until stock last.

Ena Post

MICROSCOPY

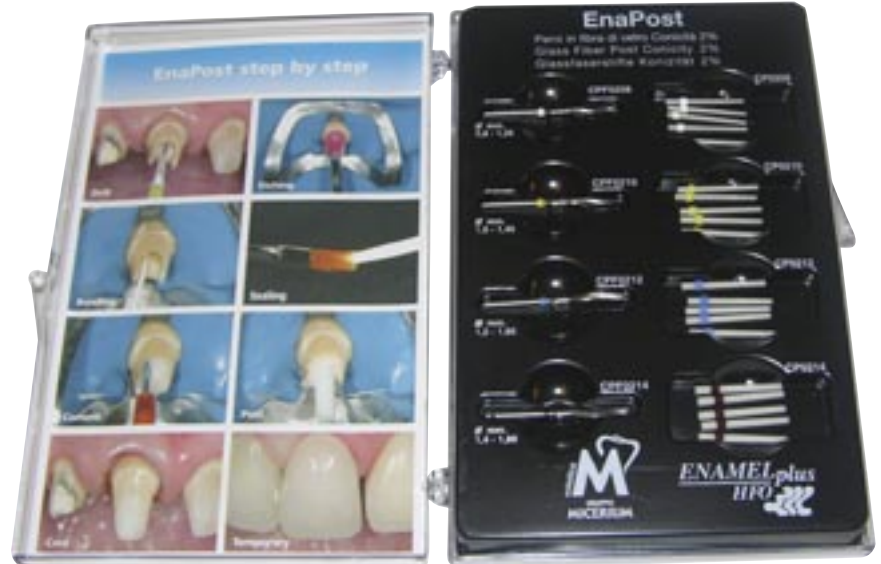
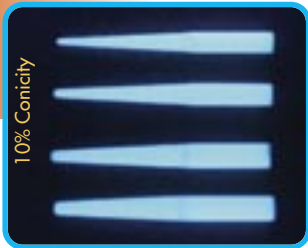
Prof. Vassilios Katsiras



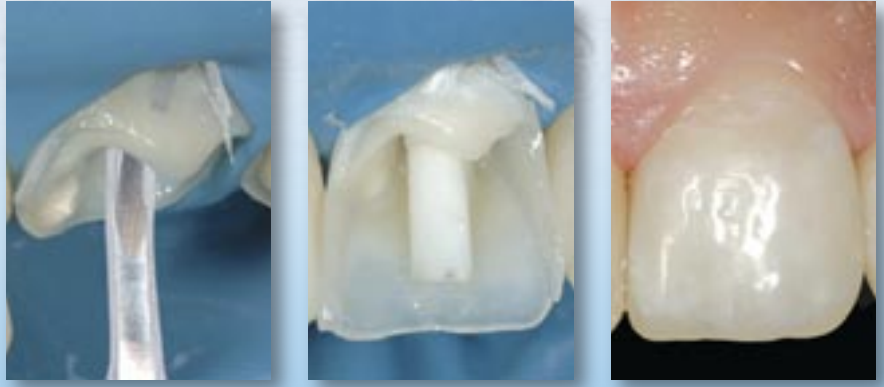
SECTION



UV LIGHT



Perfect functional and aesthetic integration with glass fibre post and composite
Restoration made by Dr. Lorenzo Vanini



OPERATIVE & TECHNOLOGICAL ADVANTAGES

- Aesthetic: fluorescent and dentine colour
- Functional: same elasticity of dentine
- Perfectly integrated with the tooth, cement and restorative material
- The only post with silanized fibres inserted in the same resin of restorative material (Enamel plus HRi)
- Perfect silanization
- Visible on X-ray only
- Coloured rings for easy identification

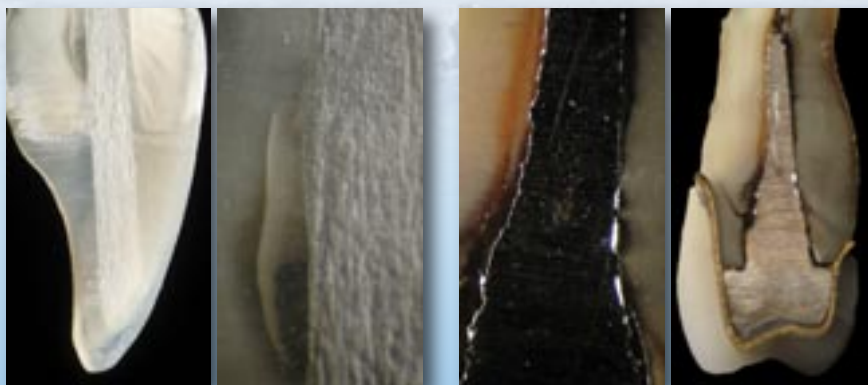


Ref	Description	Q.ty
CP0200	AESTHETIC POST KIT ENA POST 2% CONICITY: Ena Post Fiber Post ø 0,8 - 1,25 mm Ena Post Fiber Post ø 1,0 - 1,45 mm Ena Post Fiber Post ø 1,2 - 1,65 mm Ena Post Fiber Post ø 1,4 - 1,88 mm Ena Post drill 1 x each size	5 pcs 5 pcs 5 pcs 5 pcs 4 pcs
CP0208	Ena Post Fiber Post white ring ø 0,8 - 1,25 mm	10 pcs
CP0210	Ena Post Fiber Post yellow ring ø 1,0 - 1,45 mm	10 pcs
CP0212	Ena Post Fiber Post blue ring ø 1,2 - 1,65 mm	10 pcs
CP0214	Ena Post Fiber Post black ring ø 1,4 - 1,88 mm	10 pcs
CP0208-30	Ena Post Fiber Post white ring ø 0,8 - 1,25 mm	30 pcs
CP0210-30	Ena Post Fiber Post yellow ring ø 1,0 - 1,45 mm	30 pcs
CP0212-30	Ena Post Fiber Post blue ring ø 1,2 - 1,65 mm	30 pcs
CP0214-30	Ena Post Fiber Post black ring ø 1,4 - 1,88 mm	30 pcs
CPF0208	Ena Post white ring drill ø 0,8 - 1,25 mm	1 pc
CPF0210	Ena Post yellow ring drill ø 1,0 - 1,45 mm	1 pc
CPF0212	Ena Post blue ring drill ø 1,2 - 1,65 mm	1 pc
CPF0214	Ena Post black ring drill ø 1,4 - 1,88 mm	1 pc

Ref	Description	Q.ty
CP1000	AESTHETIC POST KIT ENA POST 10% CONICITY: Ena Post Fiber Post ø 0,5 - 1,6 mm Ena Post Fiber Post ø 0,7 - 1,8 mm Ena Post Fiber Post ø 0,9 - 2,0 mm Ena Post Fiber Post ø 1,1 - 2,2 mm Ena Post drill 1 x each size	5 pcs 5 pcs 5 pcs 5 pcs 4 pcs
CP1005	Ena Post Fiber Post white ring ø 0,5 - 1,6 mm	10 pcs
CP1007	Ena Post Fiber Post green ring ø 0,7 - 1,8 mm	10 pcs
CP1009	Ena Post Fiber Post red ring ø 0,9 - 2,0 mm	10 pcs
CP1011	Ena Post Fiber Post blue ring ø 1,1 - 2,2 mm	10 pcs
CP1005-30	Ena Post Fiber Post white ring ø 0,5 - 1,6 mm	30 pcs
CP1007-30	Ena Post Fiber Post green ring ø 0,7 - 1,8 mm	30 pcs
CP1009-30	Ena Post Fiber Post red ring ø 0,9 - 2,0 mm	30 pcs
CP1011-30	Ena Post Fiber Post blue ring ø 1,1 - 2,2 mm	30 pcs
CPF1005	Ena Post drill (1 mark - white) ø 0,5 - 1,6 mm	1 pc
CPF1007	Ena Post drill (2 marks - green) ø 0,7 - 1,8 mm	1 pc
CPF1009	Ena Post drill (3 marks - red) ø 0,9 - 2,0 mm	1 pc
CPF1011	Ena Post drill (4 marks - blue) ø 1,1 - 2,2 mm	1 pc



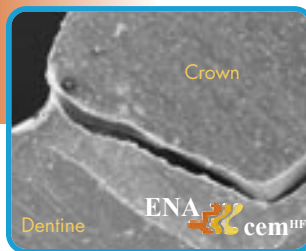
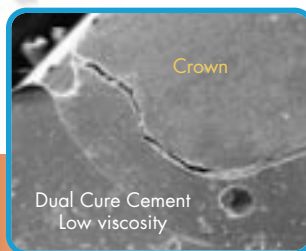
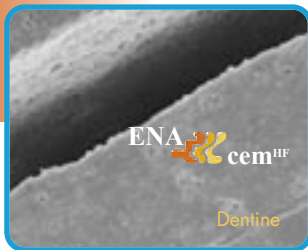
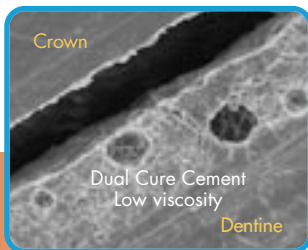
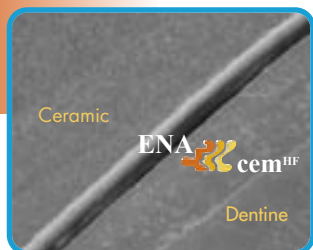
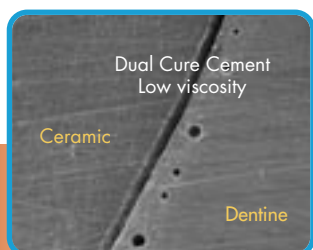
Ena Cem^{HF}



Perfect biocompatibility ...compared with cementation with Ena Post (2% conicity) and Ena Cem^{HF} ... with traditional technique

ANALYSIS UNDER MAGNIFICATION

Images under magnification show homogeneity of Ena Cem^{HF} unlike other Low Viscosity Dual Cure Cement that contains air bubbles



OPERATING ADVANTAGES

- Highly filled (77% in weight)
- Same physical characteristics as Enamel plus HRi
- No air bubbles
- Minimum thickness <50µm
- Fluorescent and radiopaque (210% Al)

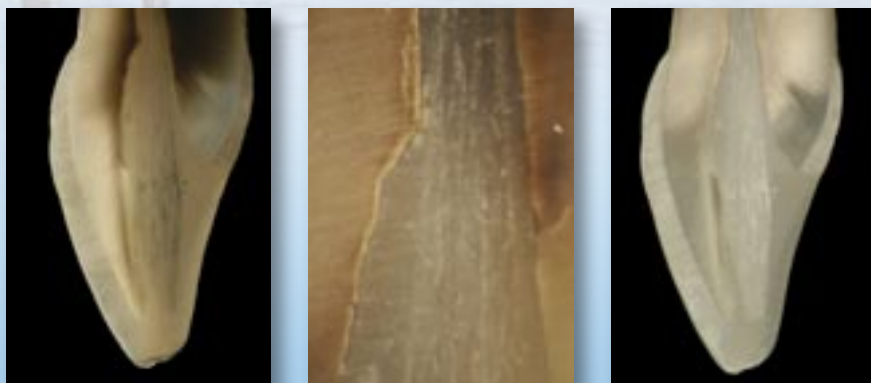
TECHNOLOGICAL ADVANTAGES

- Crown & bridge luting
- Post luting & core build-up
- Composite and ceramic veneers, inlay and onlay luting



Dispenser to facilitate the application of the cement

CPCD



Perfect canal sealing (Ena Post 10%) with Ena Cem^{HF}



PHYSICAL CHARACTERISTICS

PRODUCT	THICKNESS μm (FORCE 35N)	VICKERS HARDNESS MPa	YOUNG MODULUS MPa	FLEXURAL STRENGTH MPa	COMPRESSIVE STRENGTH MPa	RADIOPACITY
Ena Cem ^{HF}	45	670	12850	116	342	210% Al
Dual/light curing flow cement	28/55	270	5471	88	216	30% Al
High viscosity composite	> 500	600/700	8000/11000	140	400	

Ref	Description	Q.ty
CPCK	ENA CEM HF HIGHLY FILLED Dual cement Intro Kit: Ena Cem HF shades UD1-UD2-UD3-UD4 Ena-bond Bonding Ena-bond Bonding catalyst Ena-Etch Etching Gel 37% Automix Tips + Intraoral tips Orange applicators with plug	4x3 g 2 ml 2 ml 2 ml
CPCUD1	Ena Cem HF UD1 automix syringe	8 g
CPCUD2	Ena Cem HF UD2 automix syringe	8 g
CPCUD3	Ena Cem HF UD3 automix syringe	8 g
CPCUD4	Ena Cem HF UD4 automix syringe	8 g
CPCTIPN	Automix tips Ena Cem	50 pcs
CPCTIPL	Intraoral white tips Ena Cem	25 pcs
CPCTIPS	Automix tips Ena Cem with intracanal tips	50 pcs
COSM3A	Orange applicators with plug	50 pcs
CPCD	Dispenser with anatomic handle for Ena Cem HF cement	1 pc

Ref	Description	Q.ty
CPCTK	ENA CEM TRY-IN KIT Ena Cem TRY-IN shade UD1 Ena Cem TRY-IN shade UD2 Ena Cem TRY-IN shade UD3 Ena Cem TRY-IN shade UD4 Applicator tips CHFF25	2 g 2 g 2 g 2 g 25 pcs
CPCTUD1	Ena Cem TRY-IN shade UD1	2 g
CPCTUD2	Ena Cem TRY-IN shade UD2	2 g
CPCTUD3	Ena Cem TRY-IN shade UD3	2 g
CPCTUD4	Ena Cem TRY-IN shade UD4	2 g

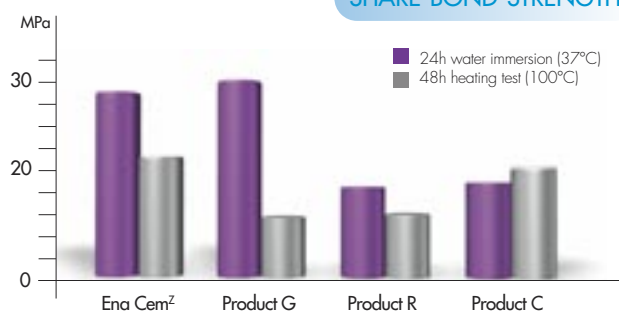
Ref	Description	Q.ty
CPC	ENA CEM LOW VISCOSITY Dual low viscosity cement	8 g

ENA CEM^Z

Luting system for zirconia

Self-curing cement with special primer for luting of zirconia prosthodontic appliances on zirconia or titanium abutment

SHARE BOND STRENGTH



Physical data

Vickers Hardness	229 MPa
Modulus of elasticity	7085 MPa
Flexural strength	107 MPa
Compressive strength	229 MPa

Ref	Description	Q.ty
CPCZK	ENA CEM^Z for ZIRCONIA Introductory Kit Self curing cement Primer	8 g 5 ml
CPCZ	Ena Cem Z self curing cement	8 g
CPCZP	Ena Cem Z Primer	5 ml

ENA CEM HV

ENA CEM^{HV} is a light-curing, high viscosity, flowable composite, developed by Dr. Lorenzo Vanini, which enhances the aesthetics of ceramic and composite veneers. The high viscosity and the high thixotropy guarantee a perfect handling for an easy application and excess removal.



CHARACTERISTICS

- High viscosity (600 Psa)
- Highly filled (80% in weight)
- Bis-GMA free
- Fluorescent
- Radiopaque

ADVANTAGES

- High Physical Properties
- Easy application
- Easy excess removal
- Minimum thickness 26 µm
- Completely biocompatible
- High aesthetics

Ref	Description	Q.ty
CPCBDK	ENA CEM HV KIT for cementation of aesthetic veneers from temporary to the final element BD1 (A1), BD2 (A2), BD3 (A3) + Ena Soft Flow	3x2 g 1 g
CPCBD1	Dentine BD1 (A1)	2 g
CPCBD2	Dentine BD2 (A2)	2 g
CPCBD3	Dentine BD3 (A3)	2 g

PHYSICAL PROPERTIES

PRODUCT	THICKNESS µm (FORCE 35N)	VICKERS HARDNESS MPa	YOUNG MODULUS MPa	FLEXURAL STRENGTH MPa	COMPRESSIVE STRENGTH MPa	FILLER (WEIGHT)
Ena Cem HV	26	941	14.900	154	410	80%
Dual/light curing flow cement	28/55	270	5471	88	216	63%
High viscosity composite	> 500	600/700	8000/11000	140	400	75%

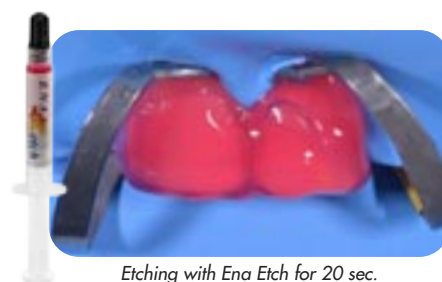
Clinical cases of Dr. Lorenzo Vanini



Feldspathic ceramic veneers



Application of Ena Cem Try-in gel in the ceramic veneers for the colour preview



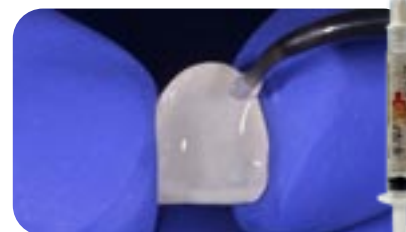
Etching with Ena Etch for 20 sec.



Veneer cementation: adhesive brushing for 40 sec. with Ena Bond



Veneer etching with 9,6% hydrofluoric acid



Silane application



Application of Ena Cem^{HV} cement

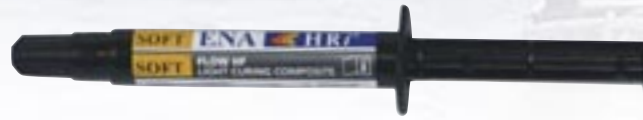


Light curing for 60 sec. each side



Rubber dam removal and polishing

ENA SOFT FLOW



ENA SOFT FLOW, is a light-curing flowable composite that remains soft after curing. It can be used for temporary inlay and onlay but it is particularly indicated for temporary veneer cementation.

TECHNOLOGICAL & OPERATIVE ADVANTAGES

- Ideal for temporary veneer cementation
- Easy to apply: it doesn't stick to the instrument
- It seals the temporary veneers remaining soft
- It can be removed without any residue
- High physical properties (flexural strength 1.54 MPa)

Ref	Description	Q.ty
EHTSF	Ena Soft Flow colour dentine	3 g



Application of Ena Soft Flow for temporary cementation



Light curing for 60 seconds



Preparation after temporary removal

ENA SOFT



ENA SOFT is an elastic material for temporary restorations. It has advantages of easy removal in one piece without any damage to the preparation.

ENA SOFT is suitable also for long term temporaries because it perfectly maintains the shape of the tooth.

TECHNOLOGICAL & OPERATIVE ADVANTAGES

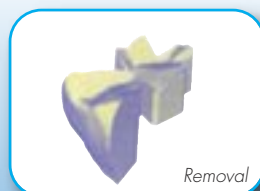
- Simple to apply: not sticky
- Easy to remove in one piece
- Suitable for inlay & onlay
- Strong and long lasting fillings
- Easy to remove from implant screws (NB: Ena Soft Flow is not suitable for implants)
- BIS-GMA free

Ref	Description	Q.ty
EHTS2	Ena Soft Dentine colour	5 g

ENA SOFT



Application



Removal



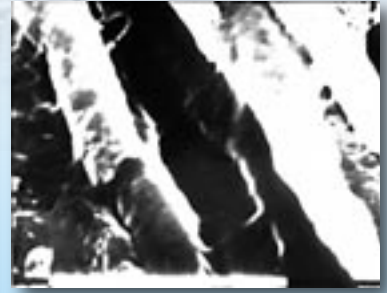
Fillings for implant screw



Temporary fillings for inlay & onlay

ENA BOND ADHESIVE ETCH & RINSE

EnaBond one-bottle



Microscope scanning of one bottle bonding 2300x and 3000x

The detail evidences the high penetration of dentine enamel bonding into the dentine tubuli (Prof. Vasilios Kaitsas).

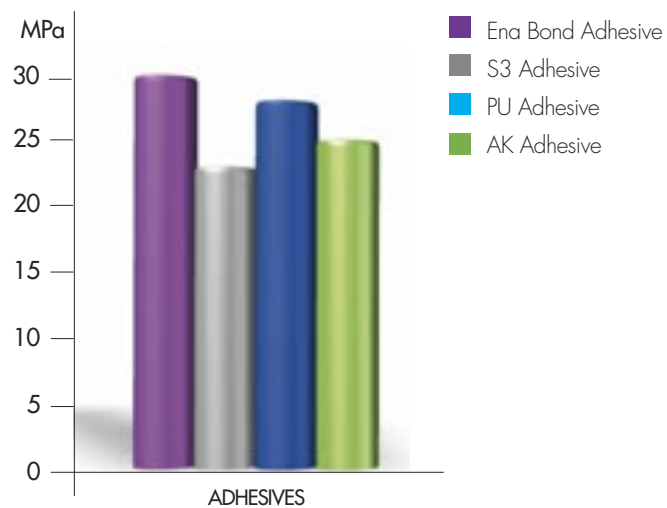
V generation adhesive One-Bottle

Ena Bond is used with Etch & Rinse technique and applied at least in two layers after etching with Ena Etch.

CHARACTERISTICS

- Aesthetics & Retention
- Bond strength values over the average industry: 30 MPa*
- Ethanol based special composition
- Dual catalyst used with dual composite
- BIS-GMA free

STRESS AT MAXIMUM BREAKING LOAD*



* Test made by University of Chieti - Prof. Camillo D'Arcangelo - Dr. Tonino Traini, in comparison with three other adhesive systems (see diagram)



Catalyst for dual curing luting

Ref	Description	Q.ty
COSM300	ENA BOND ONE-BOTTLE ADHESIVE Ena Bond light curing Bonding Phosphoric acid 37% Accessories	5 ml 2 ml

Ref	Description	Q.ty
COSM300A	Ena Bond light curing bonding	5 ml
COSM300D	Ena Bond Catalyst makes bonding dual	5 ml
COSM3B	Mixing base	20 pcs

IV generation two-bottle adhesive

Using Ena Bond as a Primer, after etching with Ena Etch, and Ena Seal as a second layer of unfilled adhesive resin, you can get excellent adhesion results and a perfect seal, converting Ena Bond into a Two-Bottle adhesive system.

CHARACTERISTICS

- Excellent adhesion values*
- 24 MPa on dentine

* Test made by University of Chieti - Prof. Camillo D'Arcangelo, in comparison with two other self-etching adhesive systems with Primer

Ref	Description	Q.ty
COSM300K	ENA BOND TWO-BOTTLE ADHESIVE	
	Ena Bond light curing Bonding	5 ml
	Ena Seal light curing resin	5 ml
	Phosphoric acid 37% Accessories	2 ml



EnaBond

two-bottle

ENA SEAL

Low viscosity light curing sealant

- Adhesive resin in combination with Ena Bond
- Brush surface conditioner (do not use with new HRi Universal Enamel)
- Composite surface sealant
- Composite restoration margin sealant



New formula



Ref	Description	Q.ty
COSZ100	ENA SEAL SEALANT - Ena Bond System	
	Ena Seal light curing sealant	5 ml
	Phosphoric acid 37% Accessories	2 ml
COSZ10	Ena Seal light curing sealant	5 ml

ENA ETCH



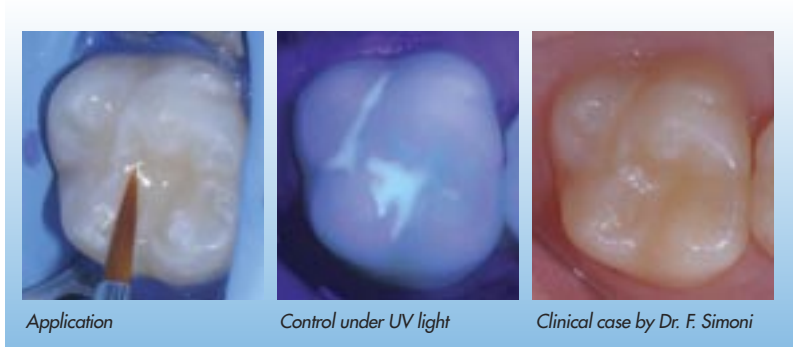
Ref	Description	Q.ty
COSM101B	ENA ETCH Phosphoric acid 37% without silicon bulk syringe usable with 2 ml rechargeable syringes	1x25 ml 2x2 ml

Ref	Description	Q.ty
COSM101	Phosphoric acid 37% without silicon	2x2 ml
COSM3S	Ena Bond applicators: small ivory	50 pcs
COSM3M	Ena Bond applicators: medium blue	50 pcs



COSM101B

ENA FLOW SEALANT "BIO"



Application

Control under UV light

Clinical case by Dr. F. Simoni

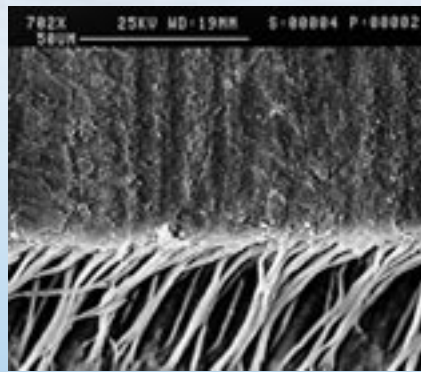
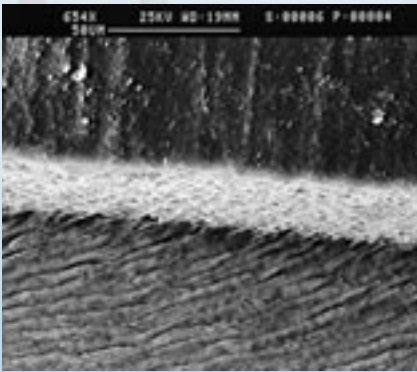
Pit & Fissure Sealant
Light curing fluid sealant
 Fluorescent for a better control under UV light
 Good wear resistance

- Natural tooth surface sealant
- Composite restoration margin sealant
- BIS-GMA and Bisphenol-A free



Ref	Description	Q.ty
EHFS	ENA FLOW SEALANT Pit & Fissure Sealant Disposable tips 0,8 mm	2 g 3 pcs

ENA BOND SE SELF-ETCHING ADHESIVE



Etched enamel and dentine treated with Ena Bond SE on electron microscope (SEM)

The microscopy shows the enamel surface and the “resin-tags” that put in evidence the penetration of Ena Bond SE in dentine tubules.

University of Tor Vergata Rome (Prof. Francesco Mangani).

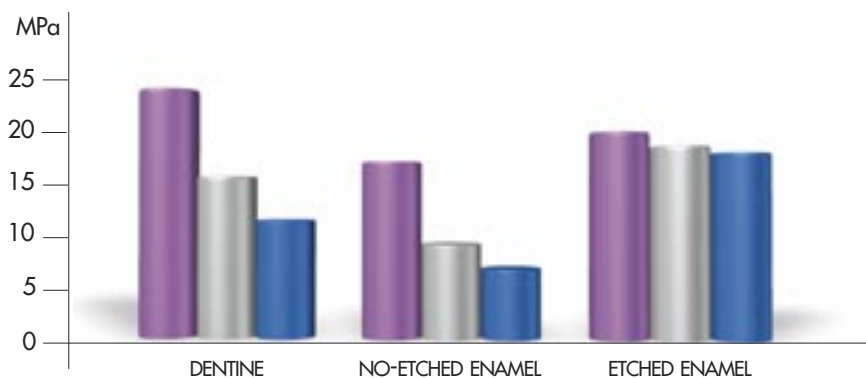
Ena Bond SE



CHARACTERISTICS

- Bond strength values over the average industry:
 - 24 MPa on dentine
 - 17 MPa on no-etched enamel
 - 20 MPa on etched enamel
- Special composition in water solution

MICRO TENSILE BOND STRENGTH*



- Ena Bond SE Adhesive
- Self Etching "K" Adhesive
- Self Etching "M" Adhesive

* Test made by University of Chieti - Prof. Camillo D'Arcangelo, in comparison with two other self-etching adhesive systems with Primer (see diagram)

Ref	Description	Q.ty
CFOTK	ENA BOND SE SELF-ETCHING ADHESIVE	
	Ena Bond SE Primer	5 ml
	Ena Bond SE Light curing resin	5 ml
	Ena Etch Phosphoric acid 37%	2 ml
	Accessories	

Ref	Description	Q.ty
CFOT	ENA BOND SE SELF-ETCHING ADHESIVE	
	Ena Bond SE Primer	5 ml
	Ena Bond SE Light curing resin	5 ml
CFOTP	Ena Bond SE Primer	5 ml
CFOTS	Ena Bond SE Light curing resin	5 ml

CLED2 - LIGHT CURING UNIT

One Touch, and you will enjoy the powerful light

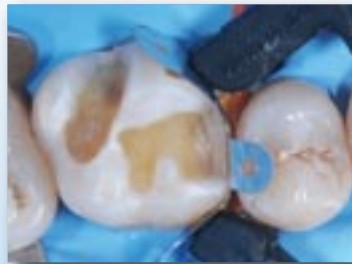
- High power: up to 2.400 mW
- Led with 2 different frequencies (between 390 and 480 nm with peaks of 405 and 460 nm) for a perfect polymerization also with different initiators
- Never Shutdown after continuous use: Smart heat-management system prevents the device from overheating after continuous use.
- Built-in radiometer: easy control of the intensity with O-led display
- Cartridge design battery; easy to be changed.
- 6 programs for polymerization and 2 to detect caries and plaque
 - Low 600 mW/cm²
 - Ramp 1000 mW/cm²
 - Standard 1000 mW/cm²
 - High 1800 mW/cm²
 - Turbo 2400 mW/cm²
 - Fast Ortho 1800 mW/cm²
 - Plaque detector
 - Caries detector



Ref	Description	Q.ty
CLED2	Micerium LED light curing unit 10 W LED - 240 V	1 pc

ENA MATRIX

Ena Matrix



Ena Matrix
Sectional Matrix System
easier than a traditional matrix,
more precise than a sectional matrix



EMK3N



EMK1N

Ref	Description	Q.ty
EMK3N	ENA MATRIX Trial Kit	
	Sectional Matrix 3,5 mm	10 pcs
	Sectional Matrix 4,5 mm	10 pcs
	Sectional Matrix 5,5 mm	10 pcs
	Sectional Matrix 6,5 mm	10 pcs
	Small wooden wedge	10 pcs
	Medium wooden wedge	10 pcs
	Large wooden wedge	10 pcs
	Tweezers for Matrix/wedge	1 pc
	Forceps for ring	1 pc
	Molar ring (black)	1 pc
EMK1N	ENA MATRIX KIT	
	Sectional Matrix 3,5 mm	25 pcs
	Sectional Matrix 4,5 mm	25 pcs
	Sectional Matrix 5,5 mm	25 pcs
	Sectional Matrix 6,5 mm	25 pcs
	Small wooden wedge	25 pcs
	Medium wooden wedge	25 pcs
	Large wooden wedge	25 pcs
	Tweezers for Matrix/wedge	1 pc
	Forceps for ring	1 pc
	Molar ring (black)	1 pc
	Premolar ring (red)	1 pc
EMP1	Tweezers for Matrix/wedge	1 pc
EMP2	Forceps for ring	1 pc

RING

- Ni-Ti ring for an excellent resistance
- Elastic memory which guarantees a long duration and precise contacts
- Autoclavable plastic tines reinforced with glass fibre, for an extraordinary retention
- Better adjustment to the tooth surface to create a cavity with an ideal shape which allows to save time during finishing
- Available in 2 sizes, "Standard" and "Narrow", to ensure an optimal separation strength even in the smaller teeth

Anatomical MATRIX

- Anatomical cervical shape with marginal ridges to reduce the time for finishing. Easier to burnish
- Tines with hole which allow the positioning and removal with the specific tweezers without any problem



Ref	Description	Q.ty
EMAM	NiTi "Standard" ring for molar (black)	1 pc
EMAP	NiTi "Narrow" ring for premolar (red)	1 pc
EM35	Sectional Matrix 3,5 mm	100 pcs
EM45	Sectional Matrix 4,5 mm	100 pcs
EM55	Sectional Matrix 5,5 mm	100 pcs
EM65	Sectional Matrix 6,5 mm	100 pcs

Diastema matrices

Ref	Description	Q.ty
EMT	ENA MATRIX KIT FOR DIASTEMA	
	Transparent matrix for diastema closure sup. mesial	5 pcs
	Transparent matrix for diastema closure sup. distal	5 pcs
	Transparent matrix for diastema closure inf. incisor	5 pcs
EMT1	Transparent matrix for diastema closure sup. mesial	25 pcs
EMT2	Transparent matrix for diastema closure sup. distal	25 pcs
EMT3	Transparent matrix for diastema closure inf. incisor	25 pcs

ENA MATRIX

Sectional Matrix "THIN" 35 micron
Ideal when there are space problems

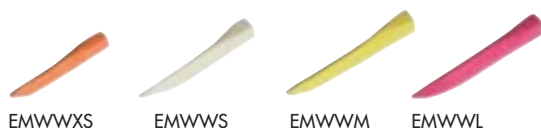


Ref	Description	Q.ty
EMKC	SECTIONAL MATRIX KIT "THIN" 35 MICRON	
	Sectional matrix 35 micron Small	25 pcs
	Sectional matrix 35 micron Medium	25 pcs
	Sectional matrix 35 micron Large	25 pcs
	Sectional matrix 35 micron Subgingival	25 pcs
	Extra small wooden wedge (orange)	25 pcs
	Small wooden wedge (white)	25 pcs
	Medium wooden wedge (yellow)	25 pcs
	Large wooden wedge (pink)	25 pcs
EMC35	Sectional matrix 35 micron Small	50 pcs
EMC45	Sectional matrix 35 micron Medium	50 pcs
EMC55	Sectional matrix 35 micron Large	50 pcs
EMC65	Sectional matrix 35 micron Subgingival	50 pcs

ENA WEDGE

Available 3 sizes of plastic wedges and 4 sizes of Wooden wedges

- They can anatomically adapt to the interproximal area and allow a complete seal both on the vestibular and lingual side
- In plastic wedges a hole, in the handle, allows the positioning and removal with the specific tweezers without any problem.



Plastic wedge

Ref	Description	Q.ty
EMW0S	Small plastic wedge (white)	100 pcs
EMW0M	Medium plastic wedge (pink)	100 pcs
EMW0L	Large plastic wedge (violet)	100 pcs

Wooden wedge

Ref	Description	Q.ty
EMWW	WOODEN WEDGE KIT	
	Extra small wooden wedge (orange)	100 pcs
	Small wooden wedge (white)	100 pcs
	Medium wooden wedge (yellow)	100 pcs
	Large wooden wedge (pink)	100 pcs
EMWWXS	Extra small wooden wedge (orange)	100 pcs
EMWWS	Small wooden wedge (white)	100 pcs
EMWWM	Medium wooden wedge (yellow)	100 pcs
EMWWL	Large wooden wedge (pink)	100 pcs

Instruments



Ref	Description	Q.ty
EMAS	Stainless steel ring with "V" shape tines	1 pc

Transparent and metal matrix roll



Ref	Description	Q.ty
EMRT08	Transparent matrix (height 8 mm - thickness 0,050 mm)	10 m
EMRT10	Transparent matrix (height 10 mm thickness 0,050 mm)	10 m
EMRM53	Metal matrix (height 5 mm - thickness 0,035 mm)	3 m
EMRM55	Metal matrix (height 5 mm - thickness 0,050 mm)	3 m
EMRM63	Metal matrix (height 6 mm - thickness 0,035 mm)	3 m
EMRM65	Metal matrix (height 6 mm - thickness 0,050 mm)	3 m
EMRM73	Metal matrix (height 7 mm - thickness 0,035 mm)	3 m
EMRM75	Metal matrix (height 7 mm - thickness 0,050 mm)	3 m

Rubber Dam Instruments developed by Dr. Lorenzo Vanini



Ref	Description	Q.ty
EMKU	ENA MATRIX RUBBER DAM KIT Rubber Dam Frame (Large, Medium, Small) Rubber Dam Punch Forceps for Clamps Interdental Floss Rubber Dam Clamps	3 pcs 1 pc 1 pc 1 pc 5 pcs

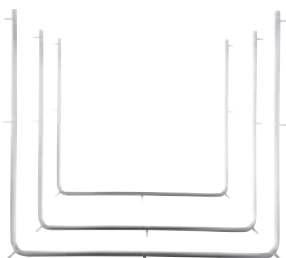
Ref	Description	Q.ty
EMU	ENA MATRIX RUBBER DAM CLAMP KIT assorted clamps	5 pcs



EMP6



EMP7



EMP5

EMU02	Ena Matrix Rubber Dam Clamp 2 for posterior		1 pc
-------	---	---	------

EMU22	Ena Matrix Rubber Dam Clamp 22 for posterior		1 pc
-------	--	---	------

EMU41	Ena Matrix Rubber Dam Clamp 41 for anterior		1 pc
-------	---	---	------

EMU51	Ena Matrix Rubber Dam Clamp 51 for anterior		1 pc
-------	---	---	------

EMU61	Ena Matrix Rubber Dam Clamp 61 for anterior		1 pc
-------	---	---	------

EMP5	Ena Matrix Rubber Dam Frame small - medium - large		3 pcs
------	--	--	-------

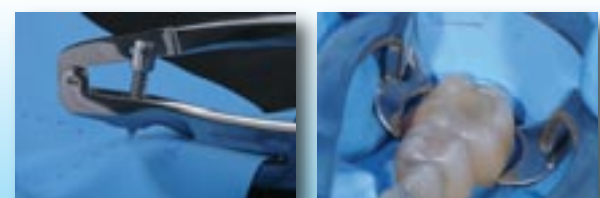
EMP5S	Ena Matrix Rubber Dam Frame small		1 pc
-------	-----------------------------------	--	------

EMP5M	Ena Matrix Rubber Dam Frame medium		1 pc
-------	------------------------------------	--	------

EMP5L	Ena Matrix Rubber Dam Frame large		1 pc
-------	-----------------------------------	--	------

EMP6	Ena Matrix Rubber Dam Punch		1 pc
------	-----------------------------	--	------

EMP7	Ena Matrix Rubber Dam Forceps		1 pc
------	-------------------------------	--	------



Clinical images courtesy Dr. Francesco Simoni

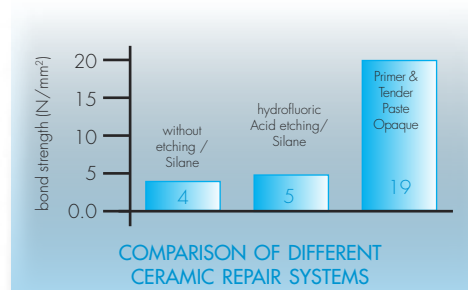
TENDER REPAIR

Ceramic repair without acid

- Higher Biocompatibility
- No risks for tissue
- Higher adhesion



Ref	Description	Q.ty
COSRIP1	TENDER REPAIR KIT ceramic & metal	
	Tender Bond metal ceramic primer	2,5 ml
	Tender paste Opaque Light for metal	3 g
	Tender paste Opaque Clear for ceramic	3 g
	Enamel plus M brush	1 pc
COSRIP2	TENDER REPAIR KIT ceramic	
	Tender Bond metal ceramic primer	2,5 ml
	Tender paste Opaque Clear for ceramic	3 g
	Enamel plus M brush	1 pc
ETBOND	Tender metal primer ceramic	5 ml
ETOL	Tender paste Opaque Light for metal	3 g
ETOCLEAR	Tender paste Opaque Clear for ceramic	3 g



ENA ETCH REPAIR

Ceramic repair

with hydrofluoric acid and silane



Ref	Description	Q.ty
COSM661	MICERIUM CERAMIC REPAIR KIT	
	Hydrofluoric acid 9,6% for ceramic	3 ml
	Silane	3 ml
COSZ15	Hydrofluoric acid 9,6% for ceramic	3 ml
COSZ25	Silane Porcelain Primer	3 ml
COSM3T	Tips for acid syringe	25 pcs

Preimpregnated Glass Fibre

Impregnated in light cured fluorescent resin, the same used for Enamel plus HRi and Ena Post

TECHNOLOGICAL ADVANTAGES

Fibres are impregnated and also silanized; filler 0,012 µm:

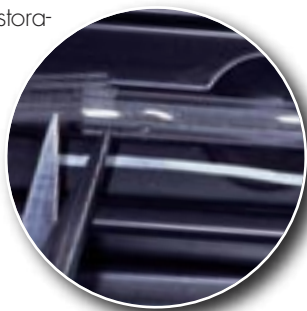
- Unidirectional single roads of glass fibre 14 µm
- Very strong resistance to acid and alkaline media
- Higher resistance of finished product
- Stronger chemical connection between fibres
- Increased physical properties

OPERATING ADVANTAGES

- Oral application without metal
- Ultraconservative, easy to repair
- Usable with most acrylics and composites
- No additional investment required
- Ready to use, fast application, reduced costs of treatment, no risk of fraying, during application in the time
- Better chemical reaction with luting and restorative materials and excellent aesthetics

Special packaging:

- Fibre holder in silicone to be used for an easy application: measure, cut, apply, cure and check

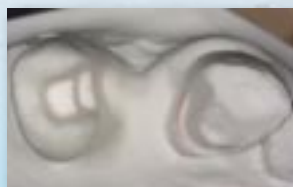


Polyethylene Fibres

Made with high molecular weight polyethylene and surface treated to achieve bonding capability that increases resin adhesion.

Improve physical properties of acrylic removable, orthodontic temporary and prosthodontic appliances. Suitable also for repair.

QUATTRO



Tender Fiber QUATTRO prosthetic reinforcement for adhesive (Maryland) bridges or inlay (Clinical images courtesy Mr. Daniele Rondoni)



Tender Fiber QUATTRO prosthetic reinforcement for composite and implant resin (Clinical images courtesy Dr. Tiziano Testori)

DUE



Periodontal splinting with Tender Fiber DUE (Clinical images courtesy Dr. Luca Pinoli)

ZERO



Polyethylene Fibre Tender Fiber ZERO for removable prosthesis reinforcement (Clinical images courtesy Mr. Daniele Rondoni)



Ref	Description	Q.ty
ATF11	TENDER FIBER ORTHO Glass fibre for orthodontic applications Length 12 cm - ø 1,8 mm (1.600 fibres)	1 pc
TF21	TENDER FIBER DUE Glass fibre for periodontal splinting Length 12 cm - ø 1,3 mm (3.200 fibres)	1 pc
TF41	TENDER FIBER QUATTRO Glass fibre for acrylic & composite prosthetic reinforcement. Length 12 cm - ø 1,7 mm (6.400 fibres)	1 pc

Ref	Description	Q.ty
TF01	TENDER FIBER ZERO Polyethylene fibre economic, not impregnated for reinforcement of orthodontic, temporary & removable acrylic prosthesis	17 mt

Ena White



Ena White

System for treatment of pathogen & iatrogenic discolouration

Vital tooth treated with Ena White Power 35% hydrogen peroxide

ENA WHITE POWER

- 35% Hydrogen peroxide for professional treatment in office
- Results in one visit
- Bicomponent syringe activates only the needed quantity for the application
- Neutral Ph 7.3, no enamel damage
- Use with rubber dam or light curing gingival protection Ena Dam



ENA WHITE REGULAR

- 12% Hydrogen peroxide professional treatment in office
- Treatment of non-vital tooth with walking technique
- Safe and effective treatment for sensitive teeth



ENA WHITE LIGHT

- 6% Hydrogen peroxide for cosmetic bleaching
- Home treatment, simple and safe maintenance
- Package with personalized label
- Pleasant freshness: mint flavour!



ENA WHITE



Ref	Description	Q.ty
COSM035E	ENA WHITE Power Kit 35% Hydrogen peroxide gel Ena Dam paste	5 g 1,5 g
COSM035	ENA WHITE POWER Refills 35% Hydrogen peroxide gel	2 x 5 g
COSM035T	Ena White automixing tips	50 pcs
COSM012	ENA WHITE REGULAR ENDO Refills 12% Hydrogen peroxide gel	2 x 2 ml
COSM015	ENA WHITE LIGHT HOME for Cosmetic Home Bleaching 6% Hydrogen peroxide gel	4 x 3 ml
COSM015B	ENA WHITE LIGHT HOME for Cosmetic Home Bleaching 6% Hydrogen peroxide gel Tray box	2 x 3 ml 1 pc
COSM03B	ENA DAM gingival protection Usable also as spacer	4 g
COSM05S	ENA WHITE Desensitizer	2x1,2 ml



EnaWhite 2.0



INNOVATIVE
BRUSHING
TECHNIQUE
WHICH
ACCELERATES
BLEACHING



ENA® WHITE 2.0

The fastest professional home bleaching with in office pre-treatment

is a system for cosmetic bleaching that uses a 6%-hydrogen-peroxide-based bleaching gel with the special XS151™ accelerator, which activates by brushing; this action exponentially increases the absorption rate of peroxide if compared to traditional bleaching.

TECHNOLOGICAL & OPERATING ADVANTAGES

- Easier to use thanks to the toothbrush with dispenser
- Greater comfort for the patient, two minutes correspond to one night with conventional, annoying bleaching trays. No ingestion of hydrogen peroxide.
- Less risk of irritation by reducing contact time: 2/3 min. per day instead of 6/8 hours to achieve the same bleaching result with bleaching trays.
- A conventional 20-day treatment provides approx. 120/160 hours contact time compared to 40/60 min. with Ena®White 2.0.

ENA WHITE 2.0 Pre-filled



ECW01



ECW01B



Ref	Description	Q.ty
ECW01*	ENA WHITE 2.0 Professional home bleaching system Toothbrush filled with 6ml H ₂ O ₂ gel	1 pc
ECW01B*	ENA WHITE 2.0 Professional home bleaching system Toothbrush filled with 6ml H ₂ O ₂ gel Enamel plus toothpaste	1 pc 1 pc
ECW02	ENA WHITE 2.0 Professional home bleaching system Toothbrush filled with 6ml H ₂ O ₂ gel	2 pcs

*minimum order: multiple of 24 pcs packed in dispenser of 12 tubes
**toothbrushes delivered in separate box for easier fridge stock (see below picture)

PHASE 1 • IN-OFFICE



2 PHASES

1st In-office, where mechanical brushing is performed;
2nd At home with the special Ena®White 2.0 toothbrush with dispenser filled with bleaching gel (enough for a treatment of about 20 days with 2 daily applications).

In-Office operating protocol

- Tartar removal
- Baking soda application with Smart Prophy Pink brush, mounted on contra-angle handpiece (200/250 rpm)
- Application of Ena®White 2.0 gel: leave on for 10 to 15 min.
- Brush the bleaching gel with dry Smart Prophy Pink brush, mounted on contra-angle (max 300/400 rpm) for about 30 to 40 seconds on each tooth.
- Filling toothbrush dispenser with Ena®White 2.0 gel from syringe
- After 20 days the toothbrush dispenser can be filled again with bleaching gel

PHASE 2 • AT HOME



Home Bleaching procedure

- Daily oral hygiene
- Spill a small amount of gel on the toothbrush and brush the teeth for 30/45 sec.
- Rinse and repeat the treatment a second time
- It is possible to continue the bleaching treatment after 20 days refilling the toothbrush with the same syringe during the follow-up visit.
- Additional bleaching with further refills are possible, with minimum intervals of 3 months

ENA WHITE 2.0

To be filled



ECW01BS



ECW6ES

Ref	Description	Q.ty
ECW01BS	ENA WHITE 2.0 Professional home bleaching system for a treatment of about 40 days	1 pc
	Toothbrush with dispenser (empty)	11 ml
	Refill H ₂ O ₂ gel	1 pc
	Enamel plus toothpaste 75 ml	

Ref	Description	Q.ty
ECW6ES	ENA WHITE 2.0 Professional home bleaching system for a treatment of about 40 days	6 pcs
	Toothbrush with dispenser (empty)	
	Refill H ₂ O ₂ gel (economy package without tubes)	6 pcs x 11 ml

Other packages available on request

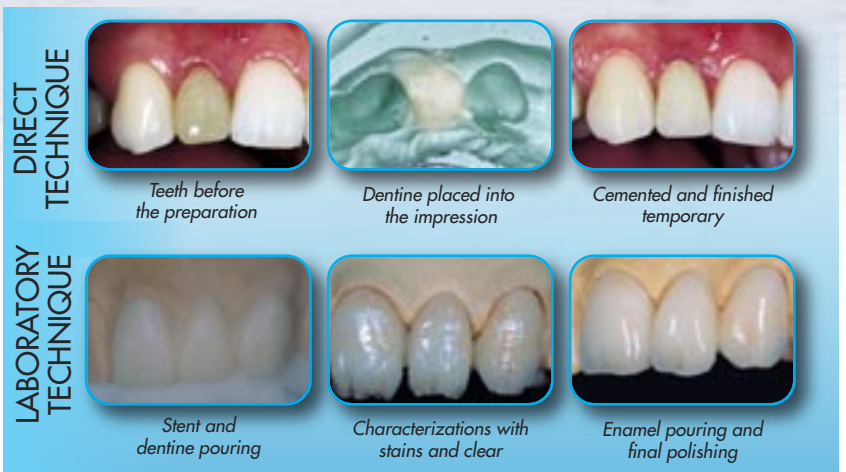
ENAMEL PLUS TEMP

Temp

for packages
see section
Laboratory
pages 52-53



Fluorescent colours



Temporary resin for aesthetic temporary crown and bridge

Very interesting material for opacity and fluorescence of dentine bodies and for translucency of enamel bodies that allow to put in evidence the typical contrast between these two elements in the natural tooth. Enamel bodies also allow to obtain a natural polishing in temporary crowns, similar to the definitive ceramic elements. It can be used both in laboratory with the help of silicone stent or of vacuum forming matrix with the direct technique using a silicone impression or a preformed crown.

MOCK UP KIT

For temporary veneers



TEMPORARY IN 5 MINUTES:

- impression with silicone and clear tray 45 sec.
- impression setting 1 min. 30 sec.
- veneer preparation
- Flow HRi application in stent 30 sec.
- light curing 60 sec.
- final light curing with Ena Seal 60 sec.

Ref	Description	Q.ty
TEMPSMU	MOCK UP KIT	
	Temp Silic Transparent Silicone for dentist	2x50 ml
	Auto Mixing Tips	8 pcs
	Anterior Transparent Tray	2 pcs
	Full Arch Upper Transparent Tray	2 pcs
	Full Arch Lower Transparent Tray	2 pcs
	Enamel plus HRi Flow	3x2 g
	Black tips ø 1,2 mm	3 pcs
	Ena Seal	2,5 ml

Ref	Description	Q.ty
TS1	Transparent Silicone for dentist	50 ml
TS1-5	Transparent Silicone for dentist	5x50 ml
TSPA	Anterior Transparent Tray	25 pcs
TSPL	Full Arch Lower Transparent Tray	25 pcs
TSPS	Full Arch Upper Transparent Tray	25 pcs

Silver Line Gel
Gingival Gel based on Colloidal Silver (10 ppm)
with Aloe and Cannabis extract
 Natural antibacterial-antiviral effect

PROPERTIES

- Adheres to the oral mucosa
- Forms a protective film
- Concentrated formulation with Colloidal Silver (10 ppm), antibacterial-antiviral effect, neutral ph
- Based on cannabis extract, aloe, hyaluronic acid and vitamin E
- Free of fluoride, sugars, mattifying agents, alcohol, fragrances, petroleum derivatives, silicones and parabens

BENEFITS

- Gives rapid relief
- Eliminates burning sensation
- Protects the oral mucosa
- Thanks to its antioxidant function ensures the well-being and hygiene of the mouth

INDICATIONS

- Aphthae, Ulcers, Recurrent aphthous stomatitis, Gingivitis, Periodontitis
- Mucositis from radiotherapy and chemotherapy
- Oral surgery, Difficult extractions
- Implantology
- Traumatic ulcers from dentures and orthodontic appliances
- Burning Mouth Syndrome



Ref	Description	Q.ty
ECSG150	SILVER LINE GEL Colloidal silver Gingival gel 9 syringes + 25 application tips	3x50 ml
ECSG50	SILVER LINE GEL Colloidal silver Gingival gel 1 syringe and 1 application tip	50 ml

ENA ORAL CARE

SMART PROPHY PASTE, BRUSHES AND RUBBERS FOR PROPHYLAXIS

Prophy paste available in 3 grains, packed in syringe with disposable tips for an accurate application. New paste without fluoride for patient with implants.



Cup brushes with flexible nylon bristles and rubbers for prophylaxis, to be used alone or with prophy paste

Ref	Description	Q.ty
ECP30B	SMART PROPHY PASTE 6 syringe with 25 tips blue for tartar (250 RDA)	6x3 ml
ECP30V	SMART PROPHY PASTE 6 syringe with 25 tips green for thick plaque (170 RDA)	6x3 ml
ECP30R	SMART PROPHY PASTE 6 syringe with 25 tips pink for thin plaque (120 RDA)	6x3 ml
ECP30K	SP SMART PROPHY KIT Prophy paste in syringes with oral tips Prophy paste blue 250 RDA Prophy paste green 170 RDA Prophy paste pink 120 RDA Oral tips ø 1,8 mm Assorted prophy brush Assorted prophy rubber	3 ml 3 ml 3 ml 25 pcs 4 pcs 2 pcs



Ref	Description	Q.ty
ECP01 ECP01B	SMART PROPHY Prophy brushes RA Soft Pink Brushes RA Brushes RA	12 pcs 100 pcs
ECP02 ECP02B	SMART PROPHY Prophy brushes RA Natural White Brushes RA Brushes RA	12 pcs 100 pcs
ECP03 ECP03B	SMART PROPHY Prophy brushes RA Hard Blue Brushes RA Brushes RA	12 pcs 100 pcs
ECP04L ECP04LB	SMART PROPHY Small Prophy brushes RA Natural White Brushes RA (long 23,5 mm) Brushes RA (long 23,5 mm)	12 pcs 100 pcs

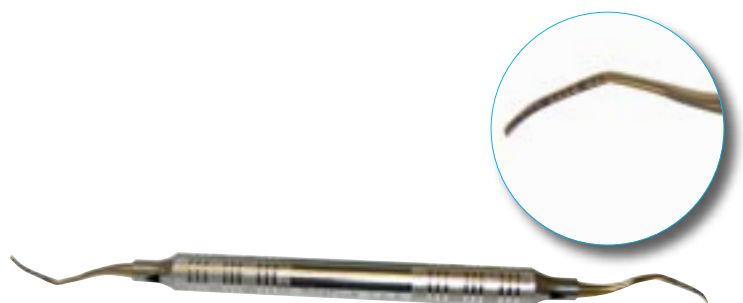
Ref	Description	Q.ty
ECP31 ECP31B	SMART PROPHY Polishers RA Medium Purple Rubbers RA Rubbers RA	12 pcs 100 pcs
ECP41 ECP41B	SMART PROPHY MINI Polishers RA Soft Pink Rubbers RA Rubbers RA	12 pcs 100 pcs
ECP42 ECP42B	SMART PROPHY MINI Polishers RA Medium Purple Rubbers RA Rubbers RA	12 pcs 100 pcs
ECP43 ECP43B	SMART PROPHY MINI Polishers RA Hard Blue Rubbers RA Rubbers RA	12 pcs 100 pcs

EASY CURETTE

Universal Curette long lasting sharpening

Graduated lines and two arrows per tip showing double cutting side

Ref	Description	Q.ty
ECC01T	Titanium Universal Curette ideal around implant	1 pc



Kiss Me Kit

The Dental kit that blows up your smile...anywhere. In your office, during your free time, keep in your pocket KISS ME Kit: you will feel always fresh and self-confident!



Ref	Description	Q.ty
ECKMK	KISS ME KIT	
	Kiss Me Spray	1 pc
	Digital Brush	5 pcs
	3E Interdental Brush Small	1 pc
	Dental Floss PTFE Tape ECIF1	1 pc
ECKMT	KISS ME KIT	
	Toothpaste	1 pc
	Digital Brush	5 pcs
	3E Interdental Brush Small	1 pc
	Dental Floss PTFE Tape ECIF1	1 pc

DIGITAL BRUSH DISPOSABLE TOWEL

Extraordinary ease for oral hygiene even outdoors

- Ideal for post-surgical cleaning, or when brushing is not possible
- It helps to prevent dental plaque

Ref	Description	Q.ty
ECDB1	DB Digital Brush with chlorhexidine 0,12%	10 pcs
ECDB1B	DB Digital Brush with chlorhexidine 0,12%	50 pcs
ECDB1D	DB Digital Brush with chlorhexidine 0,12% in dispenser	100 pcs
ECDB2	DB Digital Brush Baby with saline	10 pcs
ECDB2B	DB Digital Brush Baby with saline	50 pcs
ECDB2D	DB Digital Brush Baby with saline in dispenser	100 pcs

3E INTERDENTAL BRUSH

- Patented, anatomical, scalloped design, for an optimal removal of plaque and food debris in interdental areas
- Nylon bristles with retentive memory
- Ergonomic plastic handle
- Hygienic cap
- Stainless steel Teflon coated wire, anti-scratch, ideal also around titanium implants

Ref	Description	Q.ty
ECE30S*	Green Small brush ø from 1,2 to 4 mm L.10 mm	30 pcs
ECE30M*	Red Medium brush ø from 1,6 to 5 mm L.14 mm	30 pcs
ECE30L*	Yellow Large brush ø from 2,0 to 6 mm L.16 mm	30 pcs
ECE120	Assorted dental brushes green/red/yellow	120 pcs

**Available also in 3/6/120 pcs packaging*

IF INTERDENTAL FLOSS

PTFE Dental Floss (tape) ultra-resistant

"Credit card" dental floss with mirror for a perfect cleaning even outdoors.

Ref	Description	Q.ty
ECIF1*	IF INTERDENTAL FLOSS Waxed White Credit card with mirror	10 mt
ECIFW	IF INTERDENTAL FLOSS Waxed White Blister Packaging	50 mt

**Also available customized label (Ref. ECIFP)*

KISS ME SPRAY

- Practical mouthwash effective against halitosis because it eliminates bacteria that can cause bad breath
- Fresh mint taste - pocket packaging - gas, alcohol and saccharine free

Ref	Description	Q.ty
ECKM1	KISS ME Oral Spray	20 ml

ENAMEL PLUS MULTIPURPOSE TOOTHPASTE

Low abrasion formula (25 RDA). It protects your teeth and restorations.

- Delicate taste
- No gum irritation
- Strengthens enamel
- Desensitizing properties
- Mild bleaching



Ref	Description	Q.ty
ECEP	Toothpaste tube without box in 24 pcs display box	75 ml
ECEPB	Toothpaste tube with box	75 ml

Laboratory

EN
NE
U
M
E





Laboratory

- 52 Temporary Resin
- 54 Enamel plus Tender Composite
- 58 Light Curing Unit - Vacumix
- 59 Electric saw & Router
- 60 Wax
- 61 Pattern Resin
- 62 Instruments & Tender Handsaw
- 63 Zircoshiny

ENAMEL PLUS TEMP

Very interesting material for opacity and fluorescence of dentine bodies and for translucency of enamel bodies that allows to put in evidence the typical contrast between these two elements in the natural tooth. Enamel bodies also allow to obtain a natural polishing in temporary crowns, similar to the definitive ceramic elements. It can be used both in laboratory with the help of silicone stent or of vacuum forming matrix with the direct technique using a silicone impression or a preformed crown.



Temporary resin for aesthetic temporary crown and bridge of 2nd generation

TECHNICAL & OPERATING ADVANTAGES

- polymerization in laboratory or in the mouth
- residual monomer less than 0,8%
- it does not exceed 57°C
- high precision of fit
- easy to repair
- cadmium-free, no tertiary amines
- creamy consistency
- VICKERS hardness 140 MPa
- modulus of elasticity: 2300N/mm²

IN OFFICE TECHNIQUE



Teeth before the preparation



Dentine placed into the impression



Cemented and finished temporary

LABORATORY TECHNIQUE



Stent and dentine pouring



Characterizations with stains and clear



Enamel pouring and final polishing



Fluorescent bodies for aesthetic temporary with higher brightness and excellent integration

Ref	Description	Q.ty
TEMP1N	TEMPORARY RESIN Introductory Kit	
	4 Enamel plus Temp dentine: UD2 (A2), UD3 (A3), UD3,5 (A3,5), UD4 (A4)	4x50 g
	2 Enamel plus Temp enamel: UE2, Blue	2x50 g
	Enamel plus Temp self curing liquid	100 ml
TEMP10N	TEMPORARY RESIN Trial Kit	
	4 Enamel plus Temp dentine: UD2 (A2), UD3 (A3), UD3,5 (A3,5), UD4 (A4)	4x10 g
	Enamel plus Temp enamel UE2	10 g
	Enamel plus Temp self curing liquid	25 ml



Ref	Description	Q.ty
TEMPUD0	Enamel plus Temp dentine UD0	100 g
TEMPUD1	Enamel plus Temp dentine UD1 (A1)	100 g
TEMPUD2	Enamel plus Temp dentine UD2 (A2)	100 g
TEMPUD3	Enamel plus Temp dentine UD3 (A3)	100 g
TEMPUD3,5	Enamel plus Temp dentine UD3,5 (A3,5)	100 g
TEMPUD4	Enamel plus Temp dentine UD4 (A4)	100 g
TEMPUD5	Enamel plus Temp dentine UD5	100 g
TEMPB1	Enamel plus Temp dentine B1	100 g
TEMPB2	Enamel plus Temp dentine B2 (62)	100 g
TEMPB3	Enamel plus Temp dentine B3 (65)	100 g
TEMPB4	Enamel plus Temp dentine B4	100 g
TEMPC2	Enamel plus Temp dentine C2	100 g
TEMPD3	Enamel plus Temp dentine D3	100 g
TEMPUE1	Enamel plus Temp universal enamel UE1	100 g
TEMPUE2	Enamel plus Temp universal enamel UE2	100 g
TEMPUE3	Enamel plus Temp universal enamel UE3	100 g
TEMPS3	Enamel plus Temp enamel WHITE	100 g
TEMPOB	Enamel plus Temp enamel BLUE	100 g
TEMPT	Enamel plus Temp enamel CLEAR	100 g
TEMPGR	Enamel plus Temp enamel GREY	100 g
TEMPPP	Enamel plus Temp PINK for gum	100 g
TEMPL	Enamel plus Temp self curing liquid	100 ml
TEMP1-L	Enamel plus Temp self curing liquid	1000 ml
TEMPLH	Enamel plus Temp hot curing liquid	100 ml
TEMPLPRESS	Enamel plus Temp hot curing liquid for flask	100 ml
TEMPLC	Enamel plus Temp light curing liquid	10 ml

Ref	Description	Q.ty
COSSHINYSHIP	Goat brushes HP Micerium	12 pcs
TEMP99	Temp Stick polishing paste Micerium	100 g

"Ena Temp" Discs for CAD/CAM, available in two thicknesses in colour Universal and Light



Other types of blocks for CAD/CAM can be produced on request

Ref	Description	Q.ty
TC15UD1	Ena Temp CAD/CAM Disc diam. 98,5mm x 1,5mm UD1 (A1) Light	1 pc
TC15UD3	Ena Temp CAD/CAM Disc diam. 98,5mm x 1,5mm UD3 (A3) Universal	1 pc
TC20UD1	Ena Temp CAD/CAM Disc diam. 98,5mm x 20mm UD1 (A1) Light	1 pc
TC20UD3	Ena Temp CAD/CAM Disc diam. 98,5mm x 20mm UD3 (A3) Universal	1 pc

ENAMEL PLUS TENDER

Appearance of natural tooth, technique and aesthetics of ceramic

Micro-hybrid composite that can be used both directly in the mouth and in laboratory with a high elasticity dentine body, a paste opaque and a bonding that guarantees a unique adhesion.

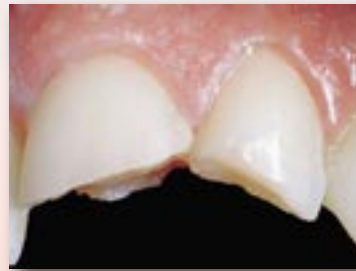
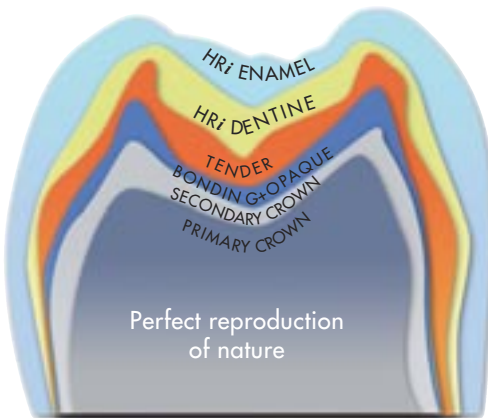
TENDER: high elasticity dentine body

HRi: high resistance enamel body

THE WINNING MATCH

LIKE CERAMIC BETTER THAN CERAMIC ...

It is possible to make adjustments also in the dental practice with the same material used in the laboratory. Enamel plus HRi can be used both for luting, making in that way at the same time a relining of the manufactured article, and as a liner, before taking the impression (available also "flow"). It allows more possibilities in implant solution and it is ideal for combined cases.



Complex fractures (Dr. Lorenzo Vanini)



Cementation and possible adjustments made always with the same material



Preparation: "HFO Flow" can be used as liner.



Composite inlay cemented with "HFO OW" (Dr. Lorenzo Vanini)



Composite build up on implants:
Tender opaque



Pressing technique with flask: Dentine



Pressing technique with flask: Enamel



Completed case by Mr. D. Rondoni



Ref	Description	Q.ty
TENDER1H	ENAMEL PLUS TENDER Introductory Kit	
	7 Tender: T2, T3, T4, T5, MW, MO, MY	7x2,5 g
	4 HRi dentine: UD2 (A2), UD3 (A3), UD4 (A4), UD5	4x2,5 g
	3 HRi universal enamel: UE1, UE2, UE3	3x2,5 g
	1 intensive enamel: Intensive White Spot (IWS)	2,5 g
	1 opalescent enamel OBN	2,5 g
	2 paste opaque: light, clear	2x3 g
	1 Tender bonding metal primer	2,5 ml
	2 Temp Chips retentions: standard, micro	2x10 g
	1 Temp Chips adhesive	20 ml
	TENDER7H	ENAMEL PLUS TENDER Inlays Kit
2 Tender: T4-MO		2x2,5 g
3 HRi dentine: UD2 (A2), UD3 (A3), UD4 (A4)		3x2,5 g
1 HRi universal enamel: UE2		2,5 g
1 Enamel plus Stain Flow: BROWN2		2 g

PRESSING TECHNIQUE WITH FLASK

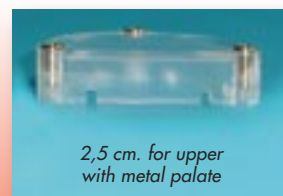
Plexiglass flask for pressing technique

Long bridges, combination works, partials, perio-overdenture

- Easy: wax-up instead of composite modellation
- Fast: save up to 70% working time
- Accurate: better surface
- Measures: 10,5 x 8,6 cm x max 5,5 cm
- 2 special inserts for reducing silicone use
- 1 universal base
- 2 covers with different heights



Ref	Description	Q.ty
TENDERFLASK	TENDER FLASK SPECIAL PLEXIGLASS flask for composite: plexiglass base plexiglass covers plexiglass inserts	1 pc 2 pcs 2 pcs



Tender Flask In-press for composite usable with plaster model

Toronto bridge, total prosthesis, surgical guide, temporaries, Bite, model duplication, composite crown & bridge

Measures: 10,4 x 10,6 cm x h 7,5 cm

Flask with covers made of different materials:

- Crystal cover for composite, available in two different heights



- Glass fibre cover for acrylic with silicone mould



- Aluminium cover for acrylic with plaster mould



Verticulator for resin and composite



Ref	Description	Q.ty
TXF1	COMPLETE TENDER FLASK IN-PRESS Aluminium base Stainless steel pins "standard" Polished aluminium cover Black glass fibre cover Polycarbonate crystal cover "standard" Stainless steel pins "small" Polycarbonate crystal cover "small" Tender Tray 4 base with magnet Metal discs for Magnets for Tender Tray 4 Stainless steel latch with click closure Pressure plate Plaster extractors Closing caps for upper holes Filling spheres	1 pc 3 pcs 1 pc 1 pc 1 pc 3 pcs 1 pc 2 pcs 4 pcs 1 pc 1 pc 2 pcs 4 pcs 1 pc 1 pc 2 pcs 6 pcs 100 pcs
TXF2	TENDER FLASK SMALL for composite Aluminium base Stainless steel pins "small" Polycarbonate Crystal cover "small" Tender Tray 4 base with magnet Metal discs for Magnets for Tender Tray 4 Stainless steel latch with click closure Pressure plate Plaster extractors Filling Spheres	1 pc 3 pcs 1 pc 2 pcs 4 pcs 1 pc 1 pc 2 pcs 100 pcs
TXF5C	VERTICULATOR for composite cover + base with spacer and locks	1 pc
TXF5B	VERTICULATOR for resin/ceramic cover + base with spacer and locks	1 pc
TXF5CC	Verticulator transparent cover for composite	1 pc
TXF5BC	Verticulator black cover for resin	1 pc
TXF5FG	Spacer and locks for verticulator	12+3 pcs
TXF12	TENDER TRAY 4 MAGNETIC flat without retentions for split cast	5 pcs
TXF22	Metal discs for Magnets for Tender Tray 4	5 pcs
TXF41	Filling Spheres	100 pcs
TXF1B	Tender Flask alluminium base (mould for split cast)	1 pc

TENDER



TENDER REFILL

Ref	Description	Q.ty
ETT2	Tender T2 (A1, A2)	5 g
ETT3	Tender T3 (A3)	5 g
ETT3,5	Tender T3,5 (A3,5)	5 g
ETT4	Tender T4 (A4)	5 g
ETT5	Tender T5	5 g
COSSTAIN T	Stain flow transparent	2 g
PLEXI26	Plexiglass syringe holder transparent 26 holes	1 pc
PLEXI26D	Plexiglass syringe holder dark 26 holes	1 pc
PLEXI9	Plexiglass syringe holder transparent 9 holes	1 pc

Ref	Description	Q.ty
ETBOND	Ena Tender bond	5 ml
ETOCLEAR	Tender paste opaque clear for first layer	3 g
ETOL	Tender paste opaque light (UD1, UD2, UD3)	3 g
ETOD	Tender paste opaque dark (UD3,5, UD4)	3 g
TEMPF	TEMP BONDING FLUID for correction/bonding of resin-composite and composite-composite	10 ml
TEMPSEAL	Temp Seal Micerium plaster sealing	1 pc
TEMPSEP	Temp Sep wax-composite-ceramic separator	1 pc
TEMPSILV	Silver colour powder for checking texture	30 g

Note: Tender bodies can also be used for B, C and D colours of Vita® shade guide



COSSTAINKIT9

ENAMEL PLUS STAIN FLOW

Light curing flow composite stains ideal for characterization of:

- fixed and combined composite prosthesis
- resin and composite temporary
- removable prosthesis

Ref	Description	Q.ty
COSSTAINKIT9	ENAMEL PLUS STAIN FLOW KIT WHITE, BLUE, BROWN, BROWN2, BLACK, YELLOW, ORANGE, RED, VIOLET 2 brushes (1 type C - 1 type F)	9x2 g 2 pcs

Ref	Description	Q.ty
COSSTAIN1N	WHITE stain refill	2 g
COSSTAIN3N	BLUE stain refill	2 g
COSSTAIN4N	BROWN stain refill	2 g
COSSTAIN5N	BROWN2 (Dark brown) stain refill	2 g
COSSTAIN6N	BLACK stain refill	2 g
COSSTAIN7N	YELLOW stain refill	2 g
COSSTAIN8N	ORANGE stain refill	2 g
COSSTAINR	RED stain refill	2 g
COSSTAINV	VIOLET stain refill	2 g



COMPOSITE & OPAQUE FOR GUM LIGHT-CURING INDIVIDUAL TRAY & RESIN STAINS



Partial

Application of pink opaque

Opaque composite

Combinated prostheses in Tender composite and resin

TENDER PINK COMPOSITE

Light curing composite pink for gingival flange
Pink opaque for partial



TENDERPKIT

Ref	Description	Q.ty
TENDERPKIT	TENDER PINK KIT Light curing composite Pink Pink Orange, Pink Light, Pink Dark, Pink Transparent Pink paste opaque Enamel plus Stain Flow: RED, BLUE, WHITE	4x2,5 g 1 g 3x2 g
ETPK	TENDER PINK KIT Light curing composite Pink Pink Orange, Pink Light, Pink Dark, Pink Transparent	4x2,5 g
ETP	Tender Pink Orange	5 g
ETPL	Tender Pink Light	5 g
ETPD	Tender Pink Dark	5 g
ETPT	Tender Pink Transparent	5 g
ETOP	Pink paste opaque light curing for covering partial	3 g
ETFP	Tender Pink Orange Flow	2 g

TEMP SILIC SILICONE

Special silicones for stent, ideal also for transparent flask



Ref	Description	Q.ty
TEMPSMK	SILICONE KIT FOR TENDER FLASK Silicone for stent/flask 90 shore A+B+retarding Silicone for stent clear 50 shore cartridge Silicone-flask separator	300 g 50 ml 60 ml
TEMPSMR3	Silicone for stent and flask 90 shore Paste A grey, Paste B brown + retarding	1,5+1,5 Kg
TEMPSM10	Silicone retarding for flasking technique	10 ml
TEMPSMT	Silicone for stent clear 50 shore cartridge working 1'30"-2'30", hardening 15-20 min.	50 ml
TEMPSMT5	Silicone for stent clear 50 shore cartridge working 1'30"-2'30", hardening 15-20 min.	5x50 ml
TEMPSI	Silicone-flask separator	60 ml
TDPUN25	Mixing tips	25 pcs

for light curing unit
LABORLUX3
see page 58



LIGHT CURING UNIT

Light curing unit for resin and composite

Ref	Description	Q.ty
LABORLUX3	Light curing unit 300 Watt with timer and revolving plate for light curing of all materials 310-500 nm	1 pc
LABORLUX-L	Refill bulb 300 Watt for LABORLUX/3	1 pc



VACUUM MIXER VACUMIX WD700

Just a finger with...Vacumix

WD700 mixer combines use simplicity with optimal performances. Suitable for mixing WITHOUT AIR every type of plaster, investment and silicone. Powerful and silent, equipped with vacuum pump that works also for dry-mixing and electronic timer. Available with wall or table support. The unit is equipped with a 500 cc bowl. Five types of bowls with different size available on request: 200, 500, 1000, 2000 cc. WD700A model with adjustable speed available on request.



TECHNICAL FEATURES

Voltage	230 V - 140 W
Motor	12 N/M
Speed	400 RPM
Pump	- 0,8 bar, 10 lt per min.
Base	22x16 cm (30x28 cm table support)
Height	30 cm (61,5 cm table support)
Weight	8,5 Kg (10 Kg table support)

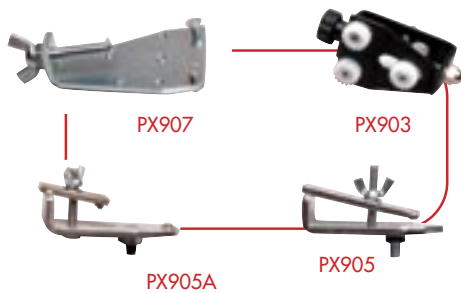
Ref	Description	Q.ty
WD700	VACUUM MIXER 400 RPM 0,8 BAR also for partials, 500 cc bowl both wall and table support	1 pc
WD711	Mixing bowl 200 cc with filter	1 pc
WD712	Mixing bowl 500 cc with filter	1 pc
WD713	Mixing bowl 1000 cc with filter	1 pc
WD714	Mixing bowl 2000 cc with filter	1 pc
WD711A	Mixing bowl 200 cc for alginate	1 pc

PRECISION CUTTING: PX901A

Easier, faster and safer

TECHNICAL FEATURES

Voltage	220-230 V, 50 Hz,
Absorption	100 W
Base	20x42 cm
Height	34 cm
Weight	10 Kg
Blade	8 cm (hole 1,6 cm)
Thickness	0,2 mm



Ref	Description	Q.ty
PX901A	ELECTRIC SAW FOR REMOVABLE DIES with modelholder and adjustable base	1 pc
ASX1000	External exauster for saw and router	1 pc
PX903	Model holder for Accutrac	1 pc
PX904	Blade	1 pc
PX905	Model holder for Tricodent	1 pc
PX905A	Model holder for Model Tray	1 pc
PX906	Adjustable metal base for support	1 pc
PX907	Model holder for Dowel Pins, Pindex, etc.	1 pc

ROUTER FOR MODELS RUTEX PX801-CE

For excellent model finishing

TECHNICAL FEATURES

Voltage	220-230 V, 50 Hz, 370 W
Base	30x21 cm
Height	30 cm
Weight	10 Kg
Motor Power	1/2 CV
Tool connector	ø 0,6 cm





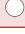




Ref	Description	Q.ty
PX801-CE	ROUTER FOR MODELS RUTEX WITH CYLINDRICAL BUR and higher base for split-cast	1 pc
PX805CE	Rutex cylindrical bur 10x20 mm	1 pc
PX807CE	Rutex tapered bur	1 pc
PX808CE	Rutex ball bur	1 pc
PX809CE	Rutex inverted cone bur	1 pc



MICERIUM FLEX WAXES FOR FIXED & REMOVABLE PROSTHETIC APPLIANCE

HIGH QUALITY WAXES FOR CASTING AND MODELLING



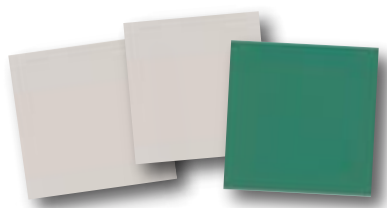
Ref	Description	Q.ty
F54G	 FLEX-E-Z GREEN It doesn't require a separator, with memory ideal for inlay, millings and precision castings	4 oz
F55G	 FLEX-E-Z GREEN	1 lb
F54B	 FLEX-E-Z BLUE It doesn't require a separator, with memory ideal for inlay, millings and precision castings	4 oz
F55B	 FLEX-E-Z BLUE	1 lb
F54W	 FLEX-E-Z WHITE for aesthetic modelling	4 oz
F55W	 FLEX-E-Z WHITE for aesthetic modelling	1 lb
F54P	 FLEX PURPLE extra hard no retraction, ideal for margins	4 oz
F55P	 FLEX-E-Z PURPLE	1 lb
F55ZB	 FLEX FOR CROWN & BRIDGE regular blue	1 lb

WAXES FOR REMOVABLE APPLIANCE WITHOUT RETRACTION



Ref	Description	Q.ty
F95H	HARD WAX PINK SHEETS ideal for PERFORM INKOVAC strong but flexible resistant till 55°C without alteration, scientific formula of fine virgin waxes	5 lb
F85H	HARD WAX PINK SHEETS 10 sheets	200 g
F95A	ALL SEASON WAX PINK SHEETS ideal all season	5 lb

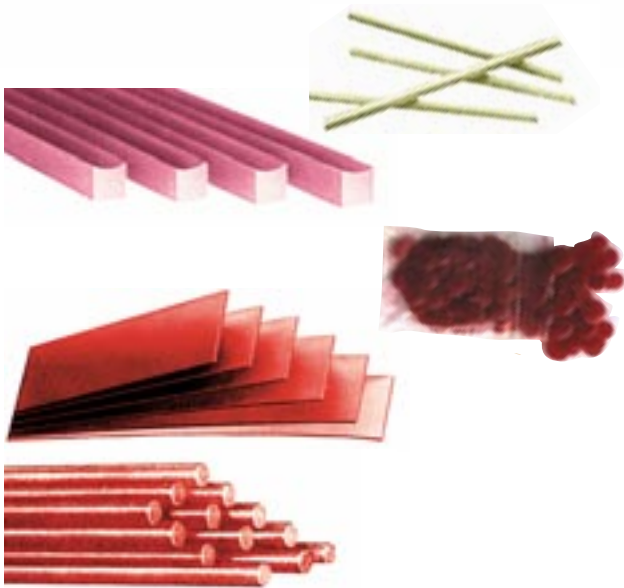
WAXES CASTING FOR PARTIALS



Ref	Description	Q.ty
from F02A to F08A	ADHESIVE CLEAR CASTING WAX available in these thickness in mm: 0,25 (F02A), 0,3 (F03A), 0,4 (F04A), 0,5 (F05A), 0,6 (F06A), 0,8 (F08A)	32 sheets
from NCASTINGW03 to NCASTINGW08	GREEN CASTING WAX available in the measures: 0,3 - 0,4 - 0,5 - 0,6 - 0,8 mm	32 sheets

MICERIUM FLEX CASTING AND UTILITY WAXES

UTILITY WAXES



Ref	Description	Q.ty
F67Y	YELLOW STICKY WAX available in sticks of 12 cm special formula fast hardening, stiff for removal with no residuals	100 g
F66P	PINK BITE STICKS WAX concave for an easier adaptation to the crest, special formula guarantees high precision bite reproduction	1 lb
F65R	DIPPING WAX RED dipping and coating die wax, high memory retention	1 lb
F66R	FLEX RED BOXING WAX STRIPS high thickness (1mm) for boxing stone or polyurethane impression, high adhesion, no heat needed	1 lb
F67R	FLEX RED BOXING WAX ROPES ideal for model repair and build up; usable also with the boxing wax strips, under the margin impression	1 lb

BURN-OUT SELF-CURING PATTERN RESIN

Burn-out self-curing pattern resin without shrinkage for accurate casting

Burn-out self-curing pattern resin for fabrication of secondary crowns, fixations for soldering, bridges, anchors, attachments, post and core etc. It can be used by mixing powder and liquid or with brush technique.



Post and core

Secondary crowns

Milling (and Maryland bridges)

OPERATING ADVANTAGES

- Burns out completely
- Minimal shrinkage <1%

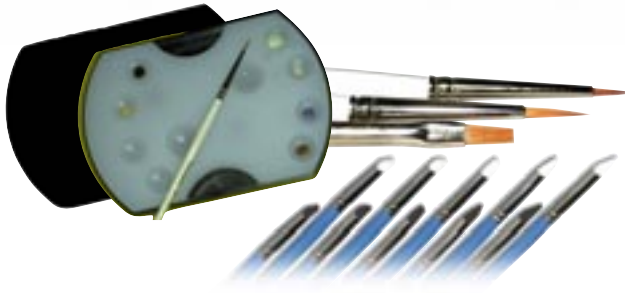


Ref	Description	Q.ty
TR100	TEMP RED BURN-OUT SELF-CURING PATTERN RESIN powder 100 g + liquid 100 ml	2 pcs
TR100P	Temp Red powder refill	100 g
TR100L	Temp Red liquid	100 ml

INSTRUMENTS

MICERIUM BRUSHES

Bristle & rubber tip brushes



Ref	Description	Q.ty
COSSTAIN01	Mixing palette with cover	1 pc
COSPEN11	Brush C for stains	1 pc
COSPEN12	Brush F for fossa	1 pc
COSPEN13	Brush M for manipulation	1 pc
TPENS	Soft white silicone brush	5 pcs
TPENN	Hard black silicone brush	5 pcs

MICERIUM INSTRUMENTS

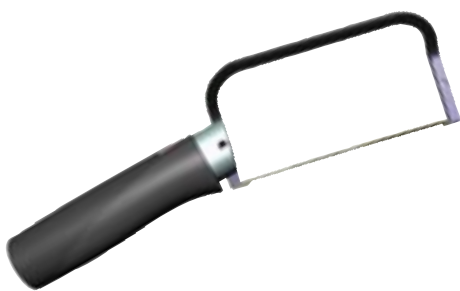
For laboratory



Ref	Description	Q.ty
TDRK1	INSTRUMENT KIT FOR COMPOSITE Instruments with inox steel tip Assorted ultra flexible screwable tips	3 pcs 3 pcs
TRAG	Grey ultra flexible tip shape A	2 pcs
TRBG	Grey ultra flexible tip shape B	2 pcs
TRCG	Grey ultra flexible tip shape C	2 pcs
TDRK2	Carving instrument Kit PKT + Lecron	6 pcs

ANATOMICAL HANDSAW

It allows a better view of the area that you're going to cut. Perfectly balanced to get fast and precise cuts. Adjustable inclination also for left-handed people.



Ref	Description	Q.ty
TX001	TENDERX HANDSAW 0,18 mm blue blade 0,25 mm gold blade	1 pc 1 pc 1 pc
TX018	0,18 mm blue blades	12 pcs
TX025	0,25 mm gold blades	12 pcs
TX018B	0,18 mm blue blades	100 pcs
TX025B	0,25 mm gold blades	100 pcs



STAINLESS STEEL MOSQUITO FORCEPS & CALIPER



Ref	Description	Q.ty
WD1	Straight stainless steel haemostatic Mosquito forceps	1 pc
WD2	Curved stainless steel haemostatic Mosquito forceps	1 pc
WD3	Brushed stainless steel caliper for metal	1 pc

Abrasives and diamond polishers for zirconia - ceramic & composite

FINISHING & POLISHING KIT FOR ZIRCONIA & CERAMIC

Ref	Description	Q.ty
ZR1000	Finishing and polishing Kit for Ceramic and Zirconia, containing:	
	Green grinder taper end ZRG02	1 pc
	Green grinder wheel ZRG01	1 pc
	White silicone wheel D7504	1 pc
	White silicone knife edge D7510	1 pc
	Pink diamond silicone wheel ZR014	1 pc
	Pink diamond silicone knife edge ZR013	1 pc
	Grey diamond silicone wheel ZR025	1 pc
	Grey diamond silicone knife edge ZR024	1 pc



POLISHERS FOR ZIRCONIA & CERAMIC

Ref	Shape	Ref	Shape
D7503		D7509	
ZR014		ZR013	
ZR025		ZR024	

- White silicone: Coarse for finishing 12 pcs
- Pink diamond silicone: Medium for polishing 1 pc
- Grey diamond silicone: Extra-Fine for high-shine 1 pc

DIAMOND ABRASIVES FOR ZIRCONIA & CERAMIC

Ref	Grinder Wheel HP	Ref	Grinder Taper End HP	Ref	Grinder Taper End HP
ZRG01		ZRG02		ZRG03	
1 pc		1 pc		1 pc	

Green: Finishing of zirconia 1 pc

DIAMOND DISC

Ref	Description	Disc	1 pc
ZR915CF	Diamond disc for zirconia d/s ø 19 mm x 0,16 mm		
D751	Superflexible diamond disc d/s ø 22 mm x 0,15 mm		
D752	Superflexible diamond disc s/s ø 22 mm x 0,10 mm		

DIAMOND BURS HP

Ref	Description	Shape	1 pc	Ref	Description	Shape	1 pc
D713	23/4030			D725	501/016		
D714	42/4030			D726	537/016		
D716	48/4030			D727	558/016		
D717	71/4030			D728	559/023		
D718	212/4020			D729	563/014		
D719	212/4030			D730	563/018		

DIAMOND PASTE FOR CERAMIC & COMPOSITE FOR LABORATORY

Ref	Description	Q.ty
ESA20	Ena Shiny A 3µm paste for composite	20 g
ESB20	Ena Shiny B 1µm paste for composite	20 g
ZRZ20	Zirco Shiny Z paste for ceramic/zirconia	20 g
ZRSHP	HP brush for Zirco Shiny Z paste	12 pcs



- A**
- Abrasives 63
 - Adhesive 32-33,35
 - Aluminium oxide paste 22
- B**
- Bio Function 8-11
 - Bleaching system 44-45
 - Bonding 32-33,35
 - Bowl 58
 - Brushes 18,62
 - Bulb 58
- C**
- CAD-CAM Disc 53
 - Caliper 62
 - Catalyst 32
 - Cement 28-29-30
 - Ceramic Paste 63
 - Ceramic polisher 63
 - Clamp 39
 - Composite 8-17,19
54,56-57
 - Composite heater 17
 - Colour Chart 15
 - Colloidal silver 47
 - Cosmetic home bleaching 42-43
 - Curette 48
- D**
- Dental Floss 49
 - Desensitizer 43
 - Diamond bur 63
 - Diamond paste 63
 - Diamond polishers 63
 - Diamond strip 23
 - Diastema matrices 37
 - Digital Brush 49
 - Disc 53,55,63
 - Disc for CAD-CAM 53
 - Discolouration treatment 42-43
 - Drill 27
- E**
- Electric saw 59
 - Ena Bond 32-33,35
 - Ena Cem cement 28-29
 - Ena Cem HV 30
 - Ena Etch 34,40
 - Ena Flow Sealant 34
 - Ena Heat 17
 - Ena Matrix 36-39
 - Ena Oral Care 47-49
 - Ena Post 26-27
 - Ena Seal 33
 - Ena Shiny 24-25
 - Ena Soft 31
 - Ena Soft Flow 31
 - Ena Temp discs for CAD/CAM 53
 - Ena White 42-43
 - Ena White 2.0 44-45
 - Enamel plus HFO 16-17
 - Enamel plus HFO Flow 19
 - Enamel plus HRi 12-16
 - Enamel plus HRi Bio Function 8-11
 - Enamel plus HRi Flow 19
 - Enamel plus Shiny 20-23
 - Enamel plus Temp 46,52-53
 - Enamel plus Tender composite 54,56-57
 - Etching gel 34,40
- F**
- Felt wheel 22-23
 - Fibre 26-27,41
 - Finishing kit 21
 - Flask 55
 - Flex waxes 60-61
 - Flowable composite 19
 - Forceps 62
 - Frame 39
 - Function 16
- G**
- Glass Connector 19
 - Glass fiber post 26
 - Goat brush 22,53
- H**
- HFO composite 16-17
 - Home bleaching 44-45
 - HRi composite 8-16,19
 - Hydrofluoridric acid 40
- I**
- Instruments 18,62
 - Interdental Brush/Floss 49
- L**
- Laboratory units 59
 - light curing unit 36,58
- M**
- Mandrel 23
 - Metal instruments 18,37,39,62

Metal matrix 39
 Metal Opaque 56
 Metal primer 40,56
 Metal strip 23
 Mixing bowl 58
 Mock up Kit 46
 Modelling resin 33
 Mosquito forceps 62

N

Opaque 56
 Oral hygiene 49

P

Pattern resin 61
 Pink composite 57
 Pit & fissure sealant 34
 Plexiglass Flask 55
 Plexiglass holder 56
 Polisher 22
 Polishing kit 21
 Polishing paste 22
 Posts 26-27
 Preparation finishing & polishing kit 21
 Prophylaxis 48
 Punch 39

R

Resin 46,52-53
 Retention 56
 Ring 37,38
 Router 59
 Rubber Dam 39
 Rubber points 22

S

Sealant 33,34
 Sectional matrix 36-39
 Separator 53,56,57
 Silane 40
 Silicone 57
 Silicone brushes 18,62
 Silver Line Gel 47
 Shade guide 10,15
 Smart prophy 48
 Spray 49
 Stain 18,56
 Strips 23,61
 Syringe/Tips Heater 17

T

Temp 46,52-53
 Temp Red 61
 Temp Silic 57
 Temporary filling 31,46
 Temporary resin 46,52-53
 Tender 54-57
 Tender Flask 55
 Tender Fiber 41
 Tender handsaw 62
 Tender Pink 57
 Tender Repair 40
 Tender Tray Magnetic 55
 Tips Enamel plus HRi 15,16
 Tips Enamel plus HFO 17
 Toothbrush 44-45
 Toothpaste 49
 Transparent matrix 37,39
 TRY-IN cement 29
 Tweezers 37

V

Vacumix mixer 58

W

Wax 60-61
 Wetting resin 32
 Wooden wedge 38

Z

Zirconia cement 29
 Zirconia polishing paste 63
 Zirconia primer 29
 ZircoShiny 63



Master Catalogue 2023



Micerium S.p.A.
Via G. Marconi, 83 - 16036 Avegno (GE)
Tel. 0185 7887 880
e-mail: hfo@micerium.it • www.micerium.com